



Title PRT100 Enhanced Toolkit Installation Guide	Rev. 1.01	Date 21/09/2009
---	---------------------	---------------------------

PRT100 Enhanced Toolkit

Installation Guide

Contents

1. INTRODUCTION	3
1.1. Document releases.....	3
1.2. Reference documents	3
1.3. Conventions	3
2. CD ORGANIZATION.....	ERROR! BOOKMARK NOT DEFINED.
3. WARNINGS.....	4
4. INSTALLATION ARCHITECTURE	4
5. INSTALLATION PROCEDURE	6
6. UNINSTALL PROCEDURE	12
7. DCOM AND NETWORK CONFIGURATION	13
7.1. DCOM configuration under Windows 2K.....	14
7.2. DCOM configuration under Windows XP.....	21
8. PORT REDIRECTION.....	30
9. SILENT INSTALL/UNINSTALL	32

	Title PRT100 Toolkit Installation Guide	Rev. 1.01	Date 21/09/2009	Page 3/32
---	--	---------------------	---------------------------	---------------------

1. Introduction

This document describes the PRT100 Enhanced Toolkit installation procedure.



1.1. Document releases

Revision	Date	Pages	Comments
1.00	10/07/2009	31	First edition
1.01	21/09/2009	32	Added the silent install/uninstall section

1.2. Reference documents

Reference	Name	Description	Code
-----------	------	-------------	------

1.3. Conventions

Example	Description
( 1)	Reference document number. Es. ( 1) Means first document of the reference documents list.

2. Warnings

- **USB INSTALLATION ON WIN2K/XP MUST BE DONE WITH THE PRINTER CONNECTED AND SWITCHED ON.**

3. Installation architecture

The installation program is available on Windows W2K/XP and it's able to recognize automatically the operative system where install the 5 main toolkit's components:

1. **Resource Kit**
2. **Opos Driver**
3. **POSDemo**
4. **Printer Driver**
5. **PosRkServer and its user interface called Printer Configuration Tool**

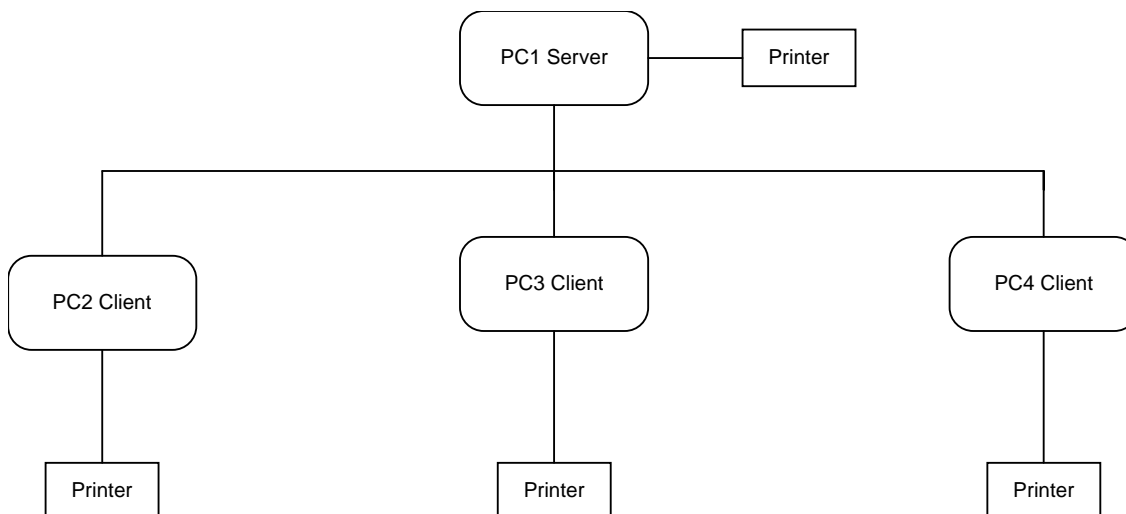
The installation procedure allows the user to choose which component to install.

The PosRkServer will be always installed.

It is possible to chose two kind of installations:

1. **Local:** Installs on a local PC all the components chosen.
2. **Network:** The network installation is divided in "Server" and "Client":
 - a. **Client:** The client is any PC in the network where the printer is plugged. In the "Client" the user can chose to install all the SW components needs to drive the printer,
 - b. **Server:** The user has to chose a PC "Server" where install the PosRkMainServer, this component is used to register the network address of all the "Client" in the network. In the network **must** be defined one and only one "Server". The "Server" may have plugged a printer or not. If yes the user can chose to install all the SW components on it as in the client PC. If the "Server" has not the printer plugged the user can chose to install the Resource Kit and the Demo to drive a printer plugged to a "Client".

A network installation can be represented in the following picture:



	Title PRT100 Toolkit Installation Guide	Rev. 1.01	Date 21/09/2009	Page 5/32
---	--	---------------------	---------------------------	---------------------

The PC1 is the “Server” and in this example has plugged a printer. From any PC of the network, using the Resource Kit and the Demo it is possible to chose the printer, local or remote, to use. So, for example, it is possible to download a new FW, using the Resource Kit running on PC2, to the printers connected to the others PCs. In order to do it, the Resource Kit has to ask to the “Server” the address of all the PC in the network and allows the user to chose the printer to download the new FW.

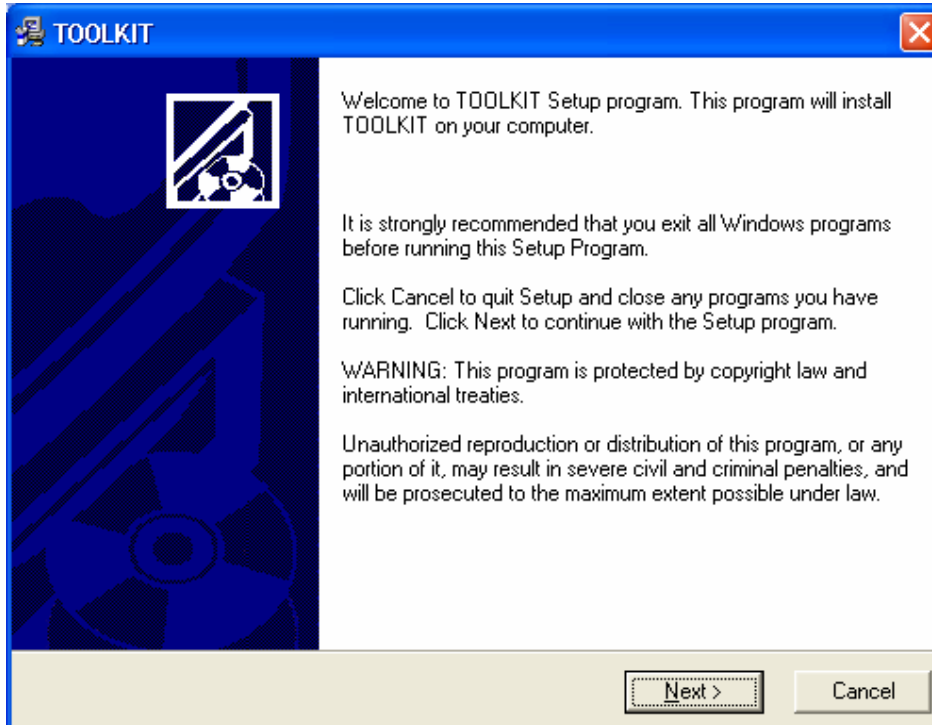
In a network configuration could be possible to install the Demo and the Resource Kit only on one PC and use it to work with the others printers. The OPOS driver, on the contrary, works only locally, so has to be installed on any PC in the network.

NOTE: The network installation, as described above, doesn’t work for the printer driver. It will be always installed locally and, if necessary, share the printer using the standard Windows mechanism.

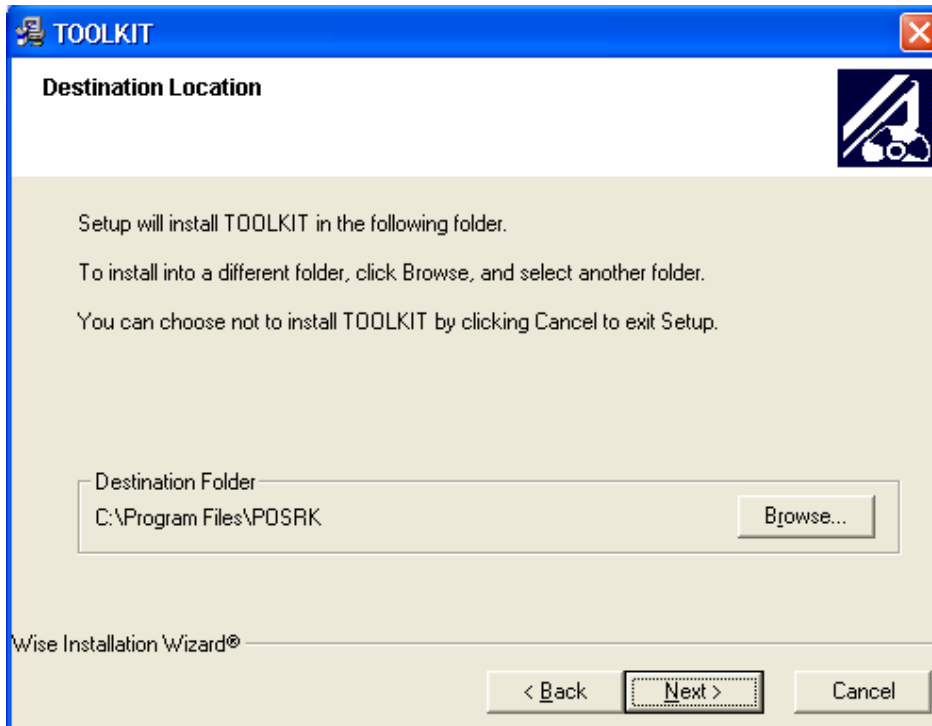
4. Installation Procedure

In this section is described the installation procedure.

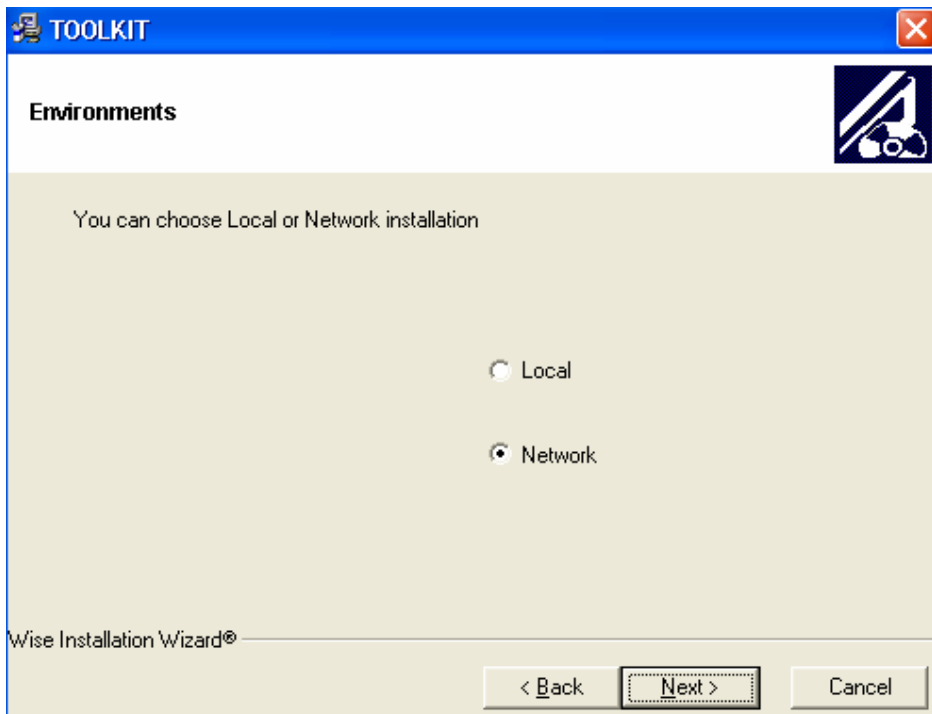
Running the Setup.exe file in the CD root starts the installation Wizard.



Clicking "Next" it is possible to choose the folder where the SW has to be installed:



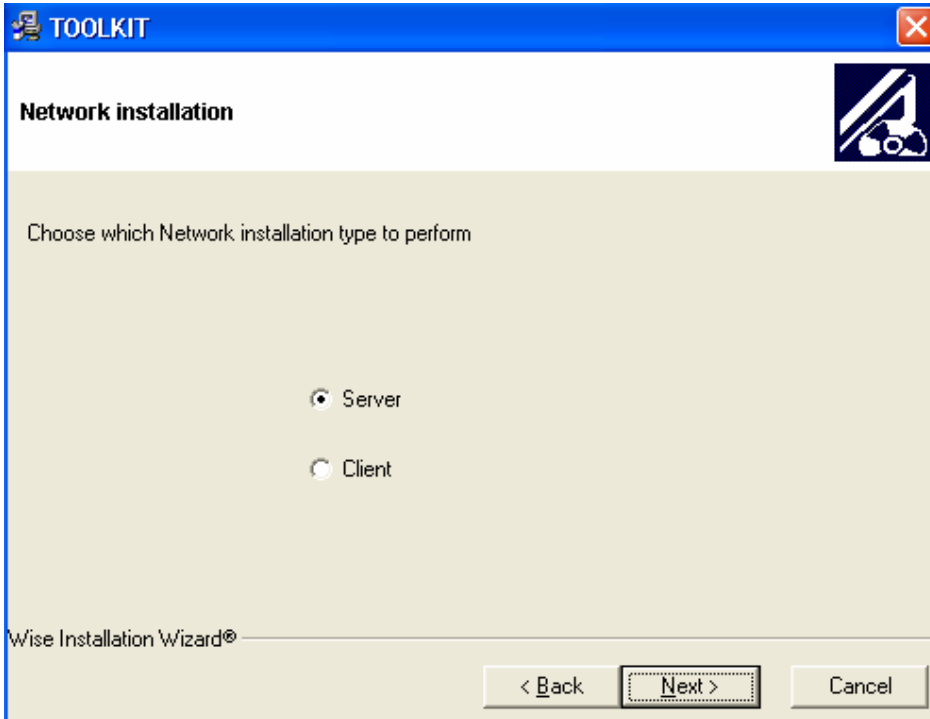
The default folder is "C:\Program Files\POSRK"
Clicking "Next" it is possible to choose the type of installation to do.



Selecting the Local installation and clicking "Next" the procedure will go to the "Components" window.

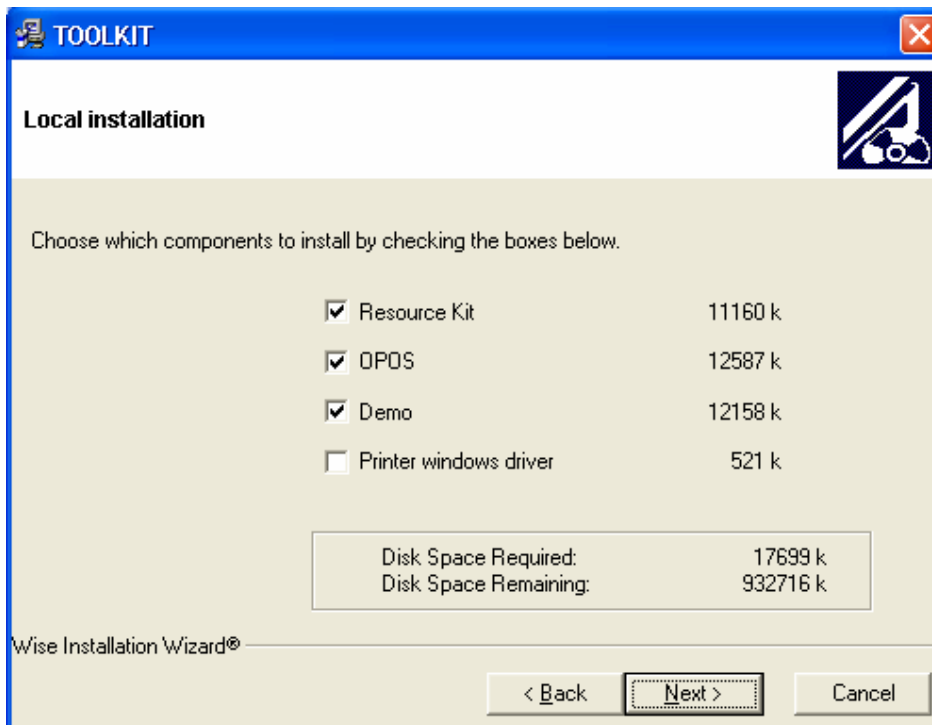
	Title PRT100 Toolkit Installation Guide	Rev. 1.01	Date 21/09/2009	Page 8/32
---	--	---------------------	---------------------------	---------------------

Selecting “Network” and clicking “Next” the installation procedure continue with a window that allows to chose the “Server” or the “Client” installation.

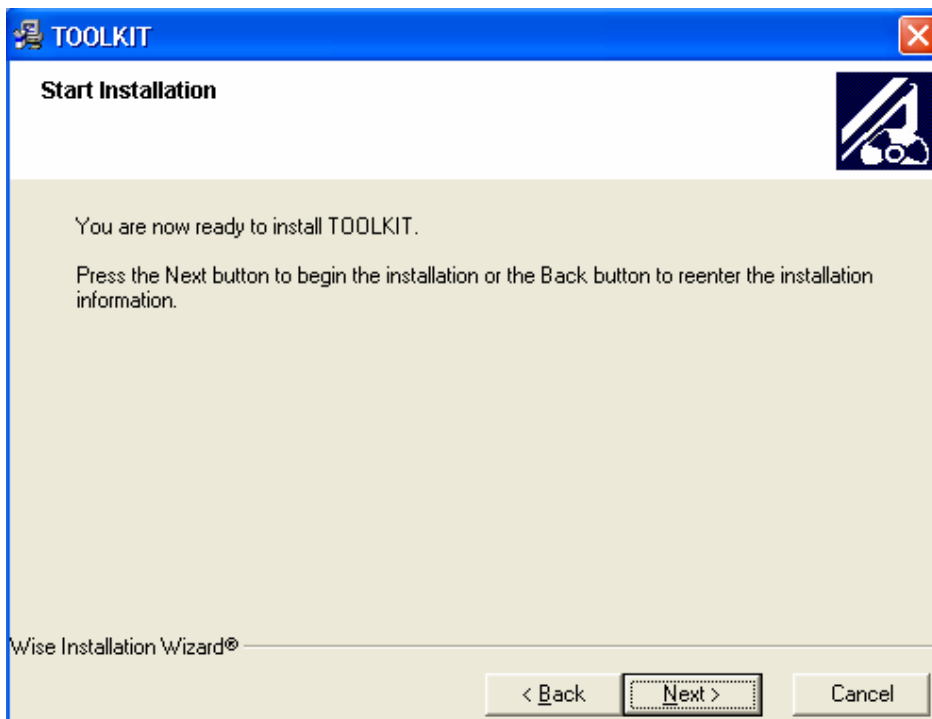


With this window the user can decide if the PC where is installing is the “Server” or one of the “Clients”. Remember that in the network must be present ONE and only ONE “Server”.

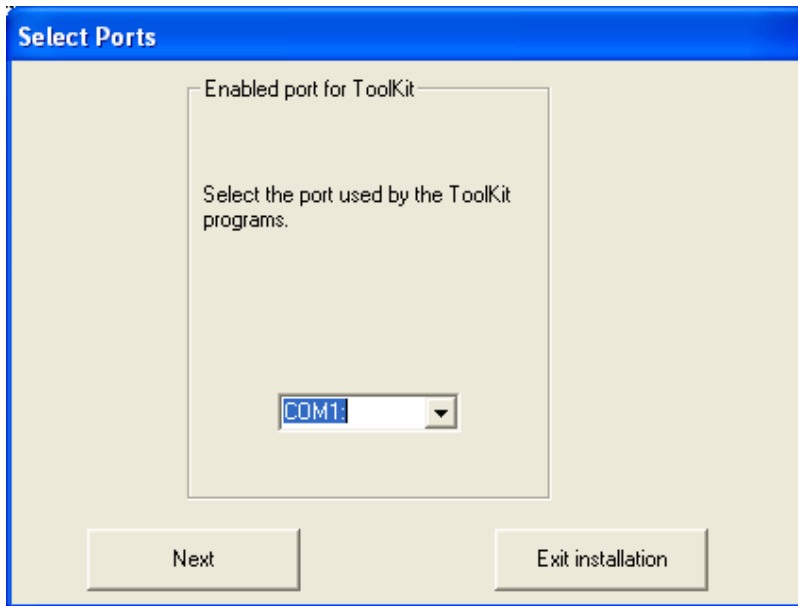
Clicking “Next” it is possible to select the SW components to install:



Clicking "Next" will be shown the following window:



Clicking “Next”, on Windows 2000/XP the program will ask the user to select the port where install the Toolkit and the Printer driver (if chosen). The following window will be shown if no printer driver is selected.

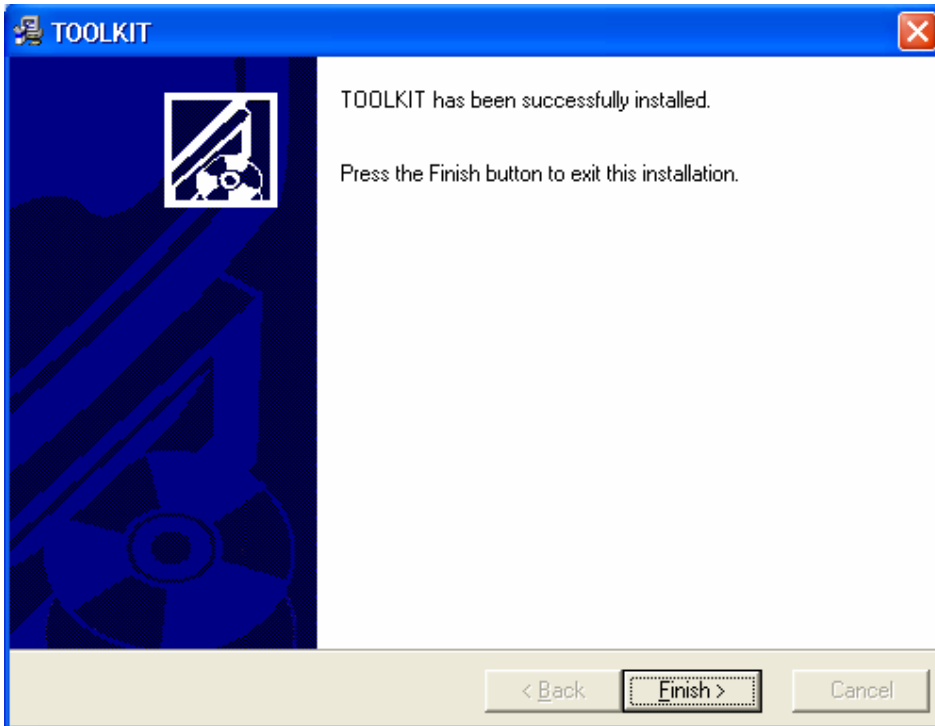


If the user select the USB port , the printer must be plugged and switched on to complete the installation .

In the paragraph “ Port Redirection” has been explained how to redirect the printer port.

After the port selection the installation starts installing the files in the HDU, changing the registry, registering the OCX and creating the new groups and the new icons.

When the installation is completed will be shown the following window.



	Title PRT100 Toolkit Installation Guide	Rev. 1.01	Date 21/09/2009	Page 12/32
---	--	---------------------	---------------------------	----------------------

5. Uninstall Procedure

At the end of the installation a “Uninstall” program is created and can be launched using the control panel “Add remove SW” applet. The uninstaller automatically remove all the toolkit components.

	Title PRT100 Toolkit Installation Guide	Rev. 1.01	Date 21/09/2009	Page 13/32
---	--	---------------------	---------------------------	----------------------

6. DCOM and Network Configuration

The installation program installs the component without changing any administration's permissions on the pc where the installation is done.

For a local installation it isn't a problem but for a network installation it could be. In order to appropriately work the network administrator has to make the following configuration:

- 1) The user/s that will work with the ToolKit has to have the permission to read/write in the folder/subfolders where the ToolKit is installed.
- 2) The ToolKit network installation works only on PCs that have in the same Domain
- 3) Verify that the installed DCOM components have the right permission. In order to do this operation it is necessary to use the "dcomcnfg" tool already present in the O.S.

	Title PRT100 Toolkit Installation Guide	Rev. 1.01	Date 21/09/2009	Page 14/32
---	---	----------------------------	----------------------------------	-----------------------------

6.1. DCOM configuration under Windows 2K

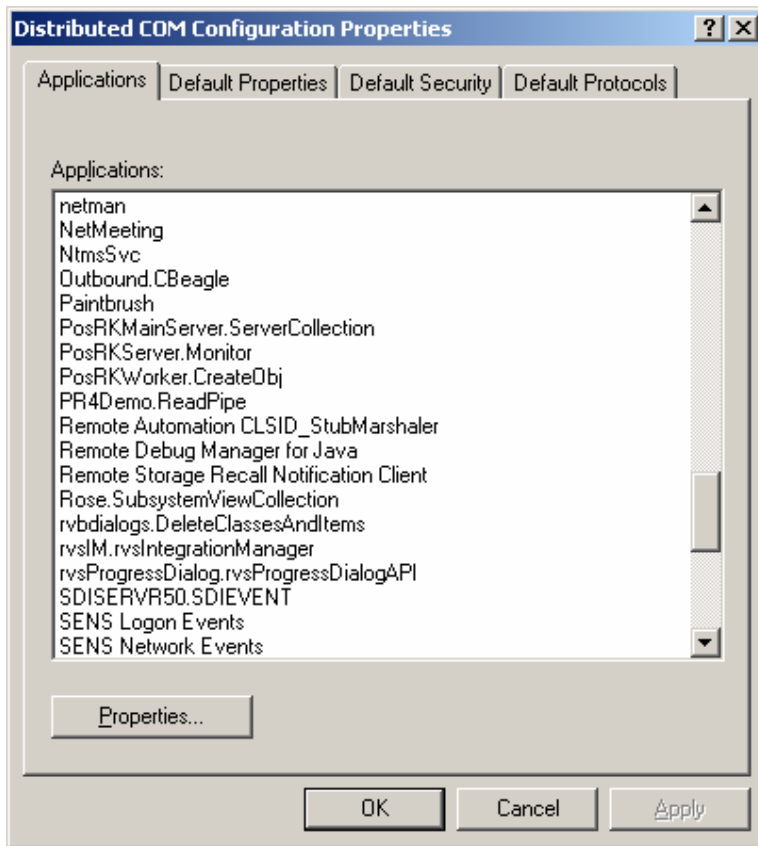
In order to configure DCOM it is necessary to use the “dcomcnfg” tool.

The installation program may install 2 or 3 dcom components depending of the installation type (Client or Server):

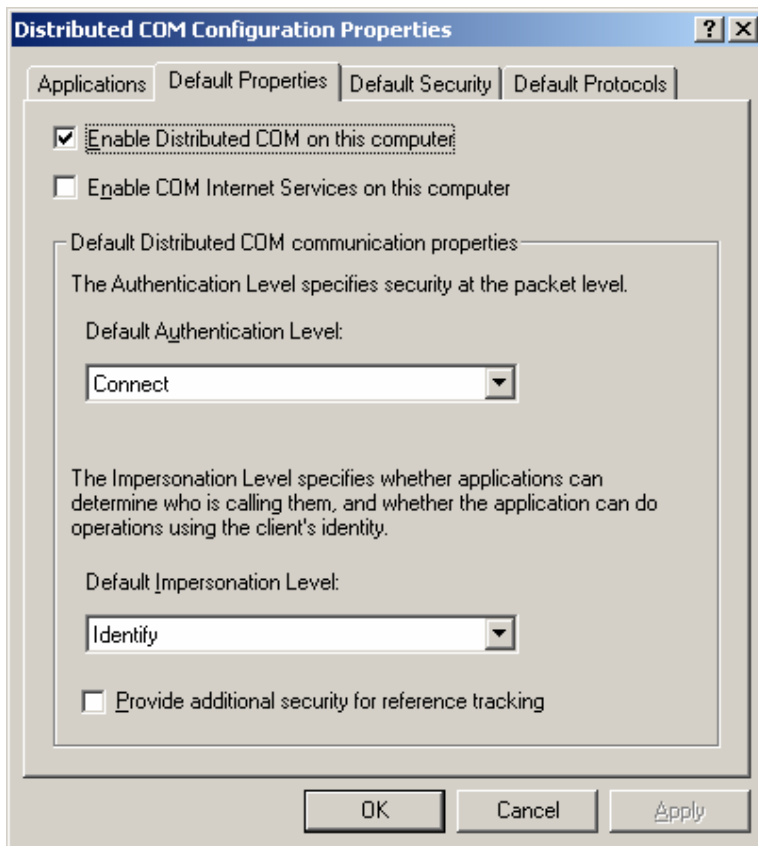
1. PosRKServer.Monitor
2. PosRKWorker.CreateObj
3. PosRKMainServer.ServerCollection (Server installation only)

For any component it is necessary to define specific settings. All custom settings take precedence over the default ones.

On the server computer, click the Start button, and then select Run. In the Run dialog box, type Dcomcnfg, and then click OK. You need to have Administrator rights to be able to run Dcomcnfg.

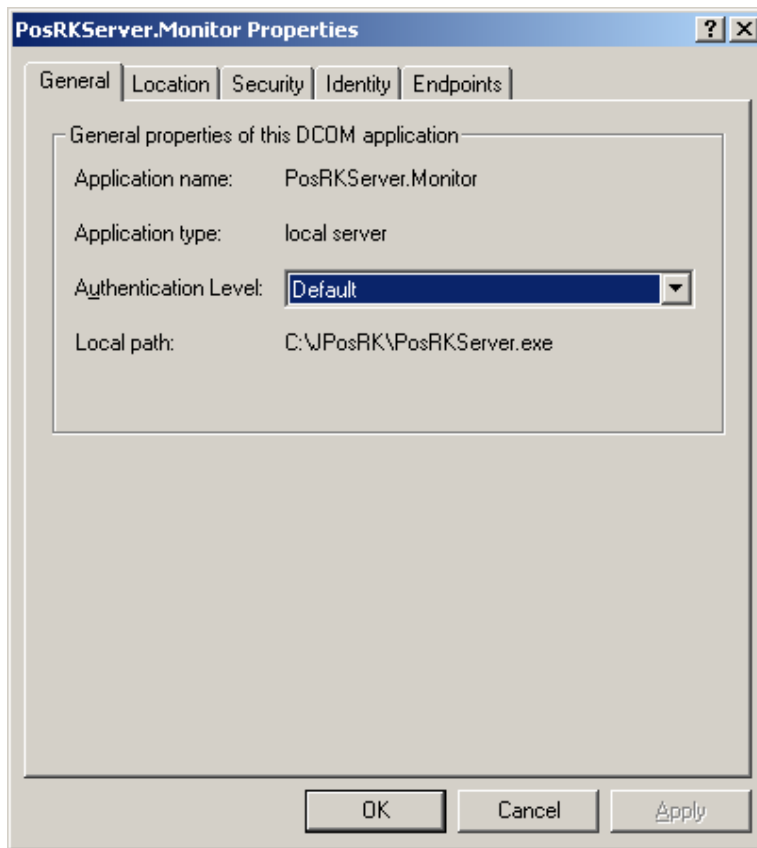


Select the Default Properties tab, and verify that Enable Distributed COM on this computer is checked.

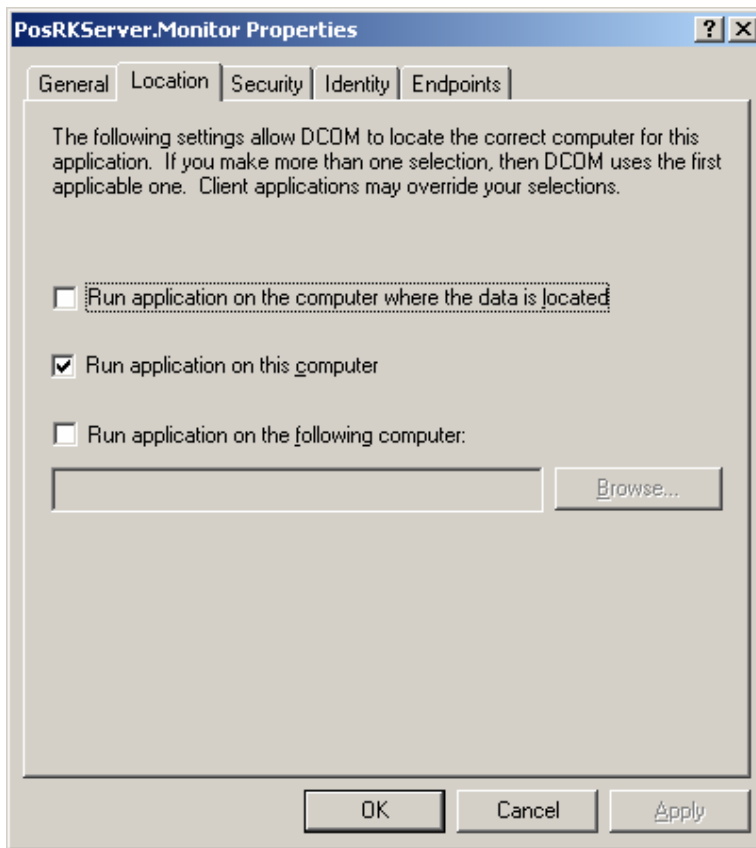


Select the Applications tab, highlight your server, for example PosRKServer.Monitor, and then click the Properties button.

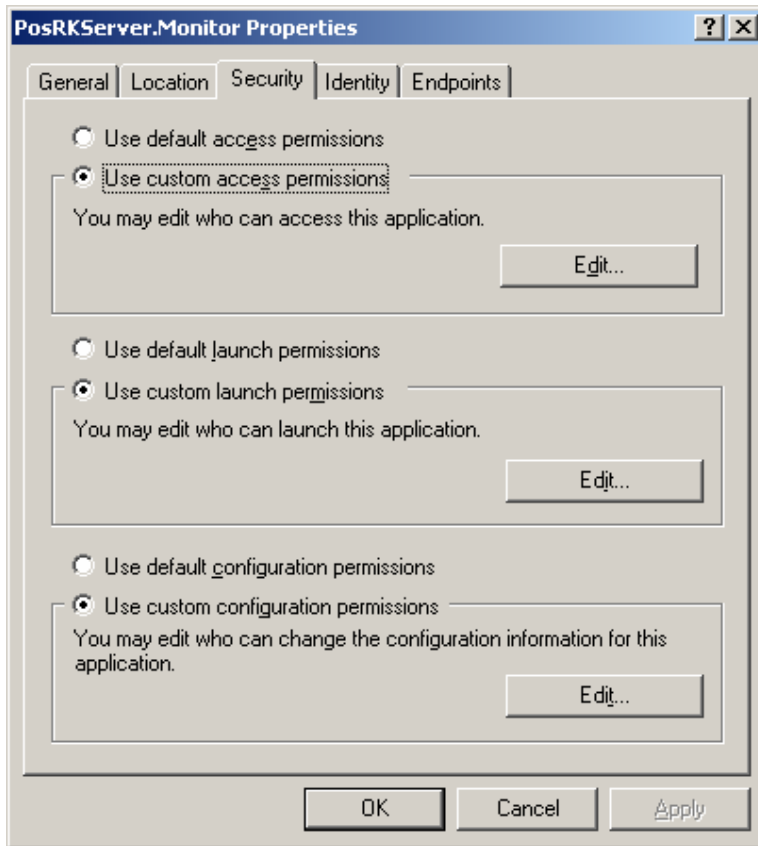
Select the General tab, and set the Authentication Level to Default.



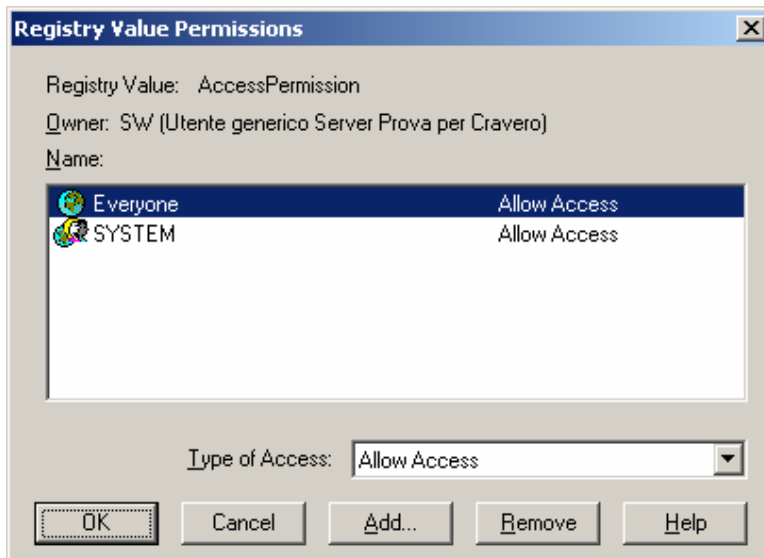
Select the Location tab. The only option that is checked should be Run application on this computer.



Select the Security tab and verify that the Use custom access permissions and the Use custom launch permissions options are checked.

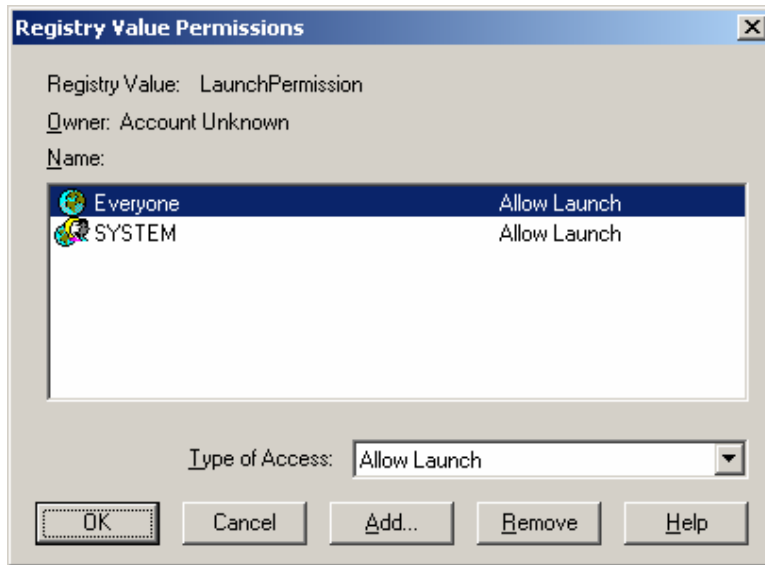


Click the Edit button in the Use custom access permissions panel.



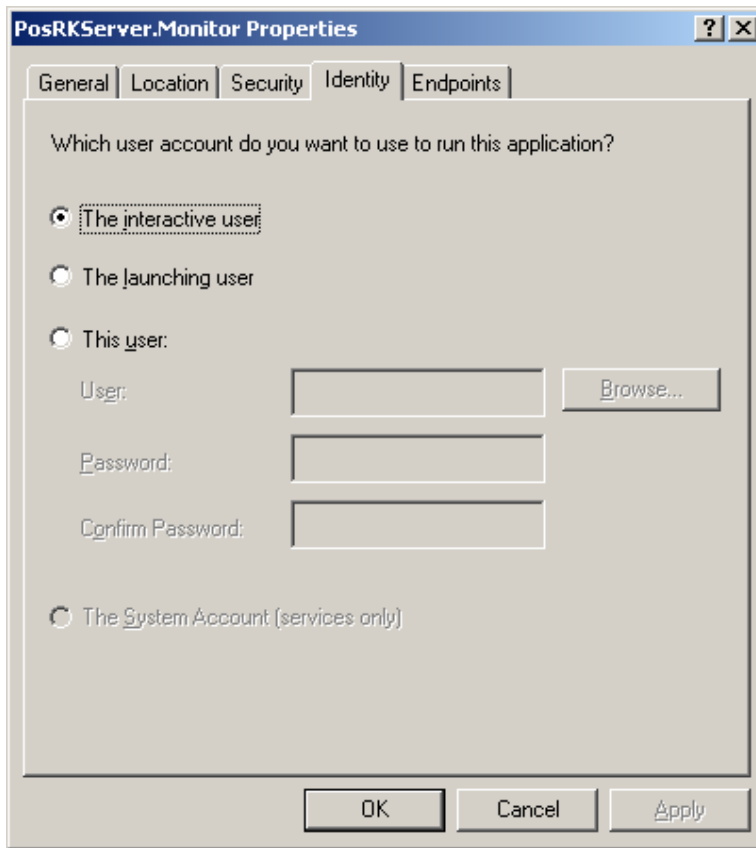
Verify that Everyone and System are included in the list with Allow Access rights. If they are not, you can use the Add button to add them to the list. Click OK when the list is complete.

Click the Edit button in the Use custom launch permissions panel.



Verify that Everyone and System are included in the list with Allow Launch permissions. If they are not, use the Add button to add them to the list. Click OK when the list is complete.

Select the Identity tab, check The interactive user option, click OK to close the Server's Properties dialog box.



Repeat the procedure for all the POSRK sever in your PC: PosRKServer.Monitor, PosRKWorker.CreateObj and PosRKMainServer.ServerCollection (if server installation).

Click OK and to close Dcomcnfg.

6.2. DCOM configuration under Windows XP

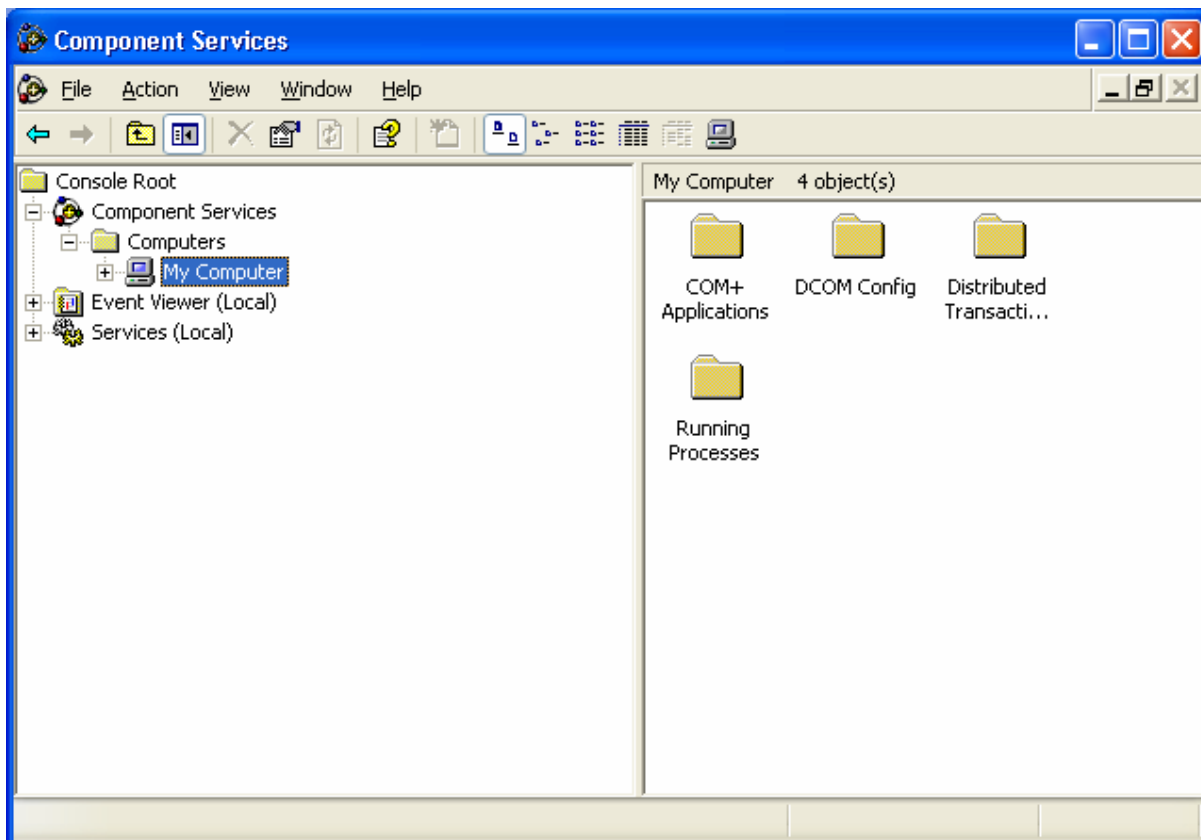
In order to configure DCOM it is necessary to use the “dcomcnfg” tool.

The installation program may install 2 or 3 dcom components depending of the installation type (Client or Server):

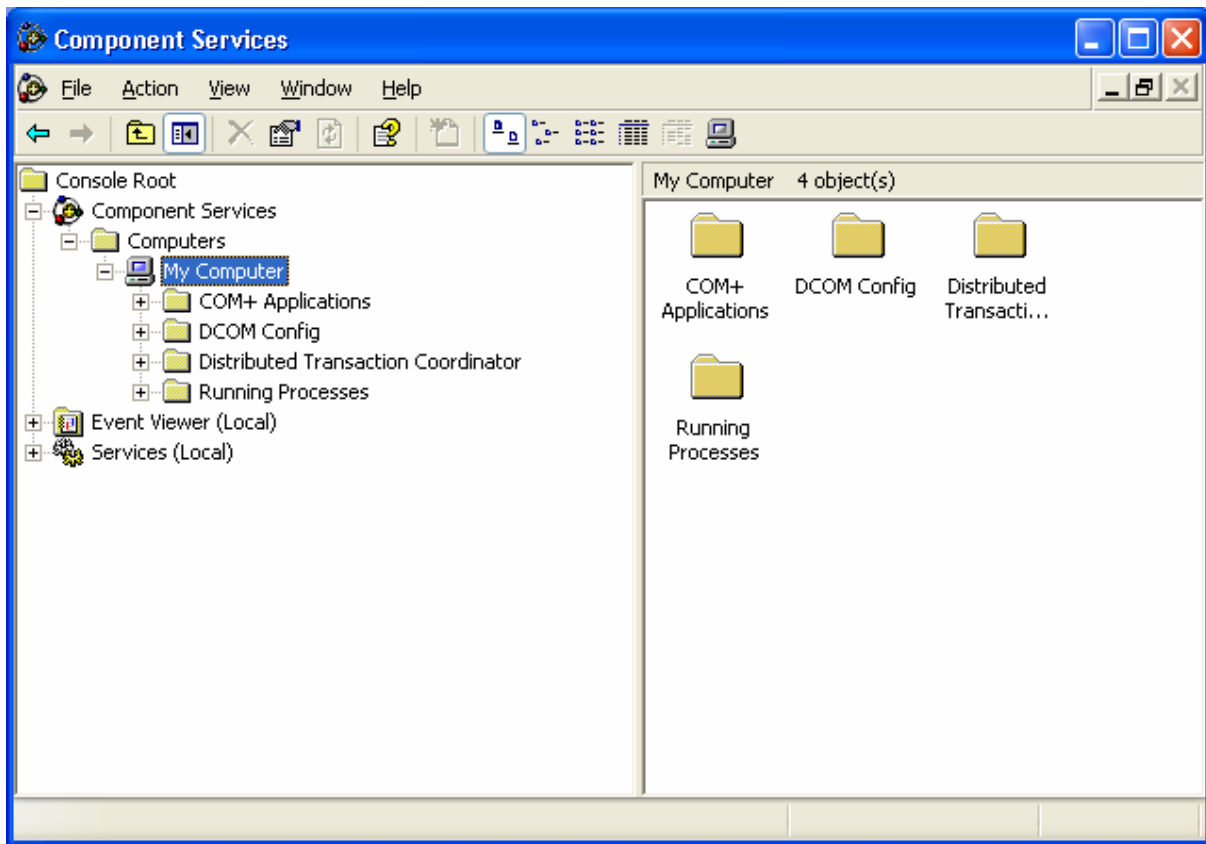
4. PosRKServer.Monitor
5. PosRKWorker.CreateObj
6. PosRKMainServer.ServerCollection (Server installation only)

For any component it is necessary to define specific settings. All custom settings take precedence over the default ones.

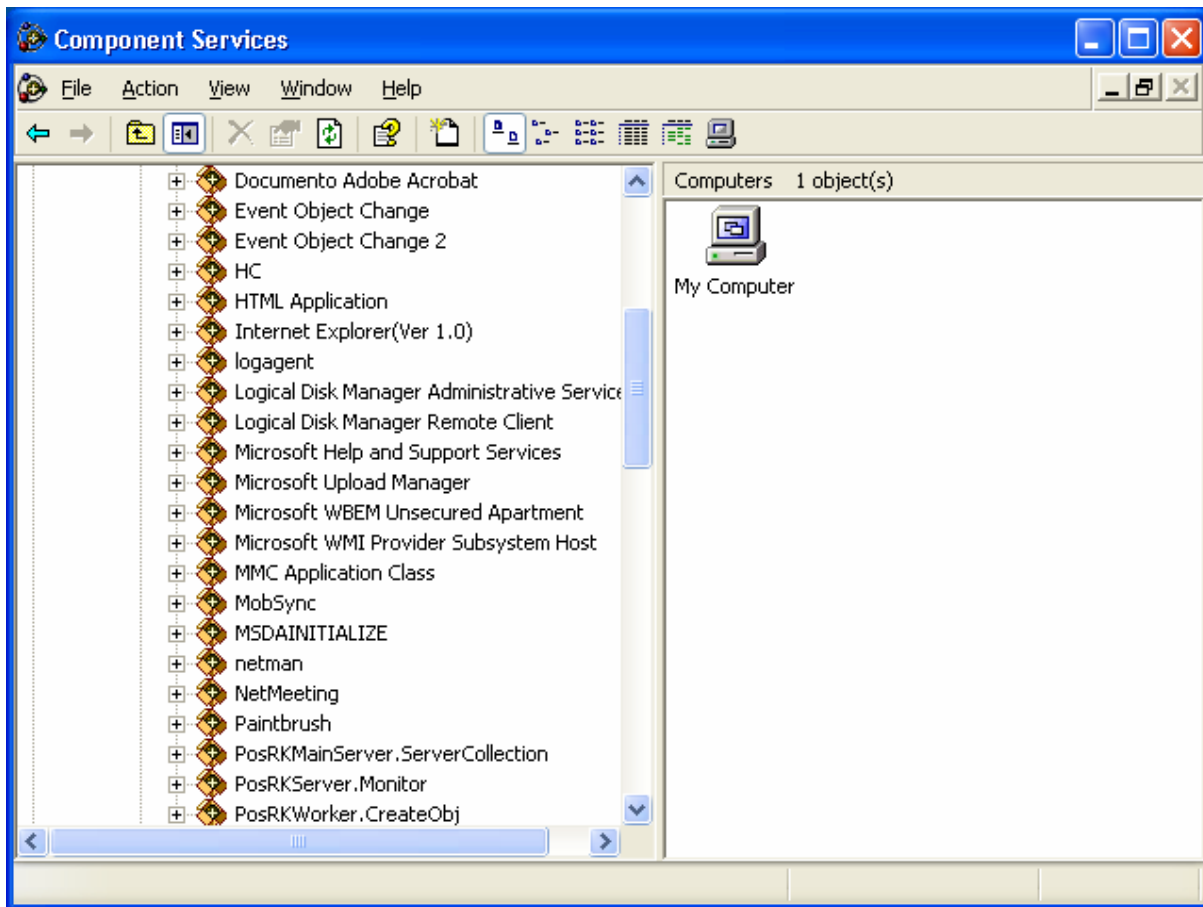
On the server computer, click the Start button, and then select Run. In the Run dialog box, type Dcomcnfg, and then click OK. You need to have Administrator rights to be able to run Dcomcnfg.



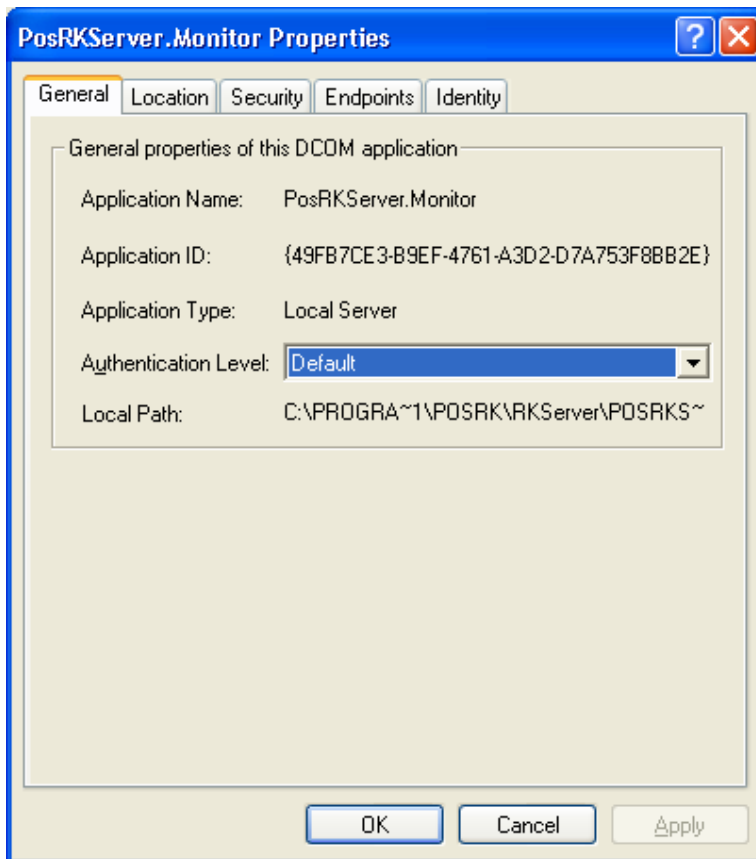
Open “My Computer” folder



Open the "DCOM Config" folder

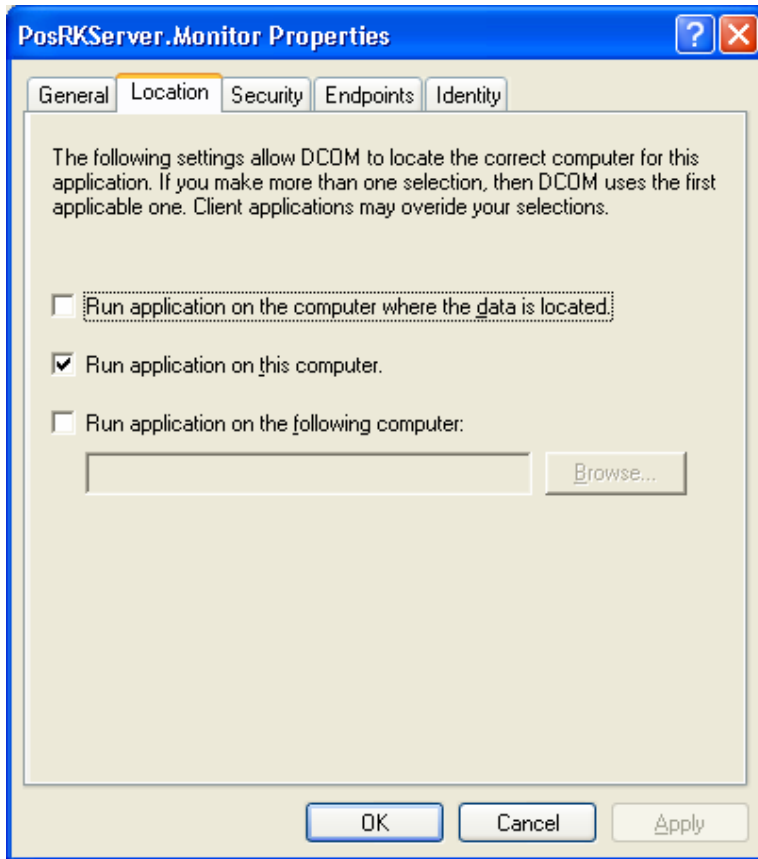


Highlight your server, for example PosRKServer.Monitor, and then right click with the mouse and select the Properties menu.

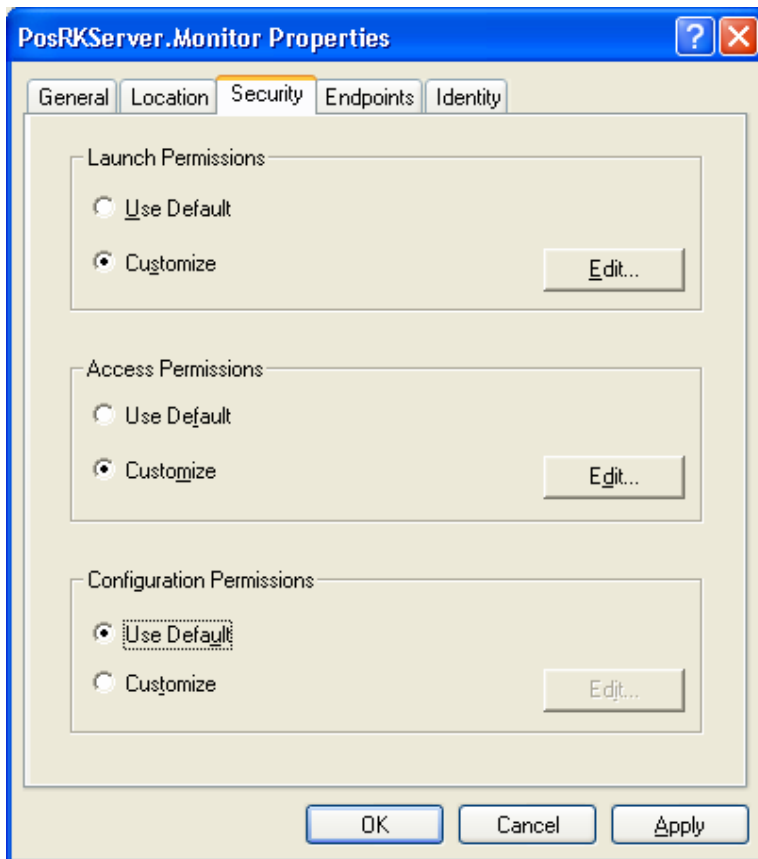


In the General tab set the Authentication Level to Default.

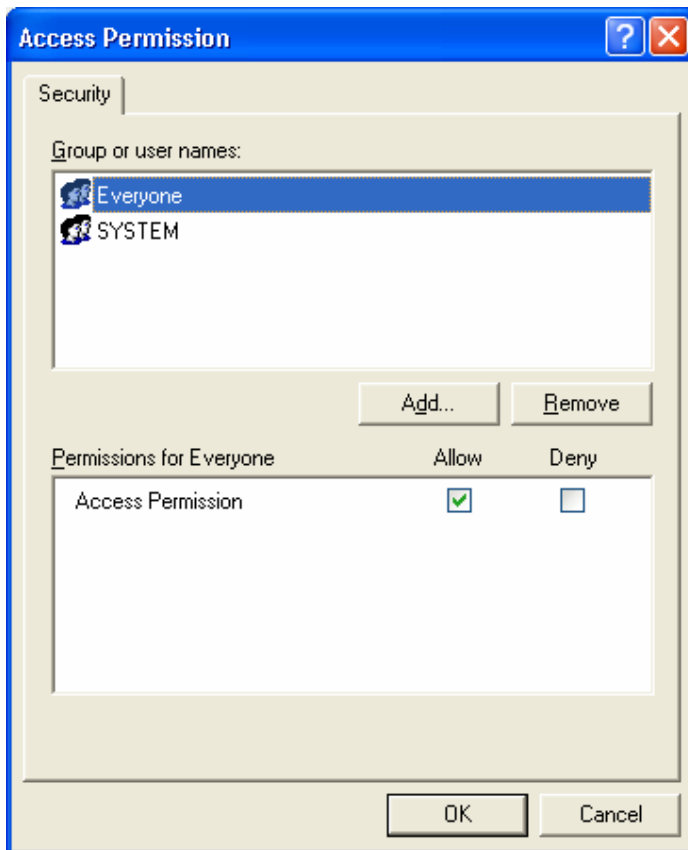
Select the Location tab. The only option that is checked should be Run application on this computer.



Select the Security tab and verify that in the Access Permissions and the Launch Permissions panels is selected the "Customize" option.

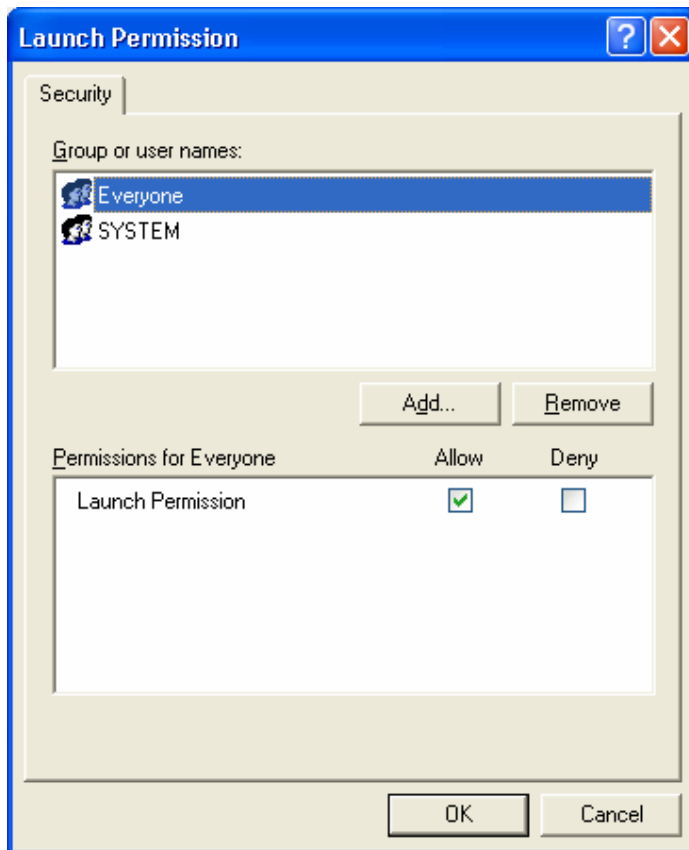


Click the Edit button in the Access Permissions panel.



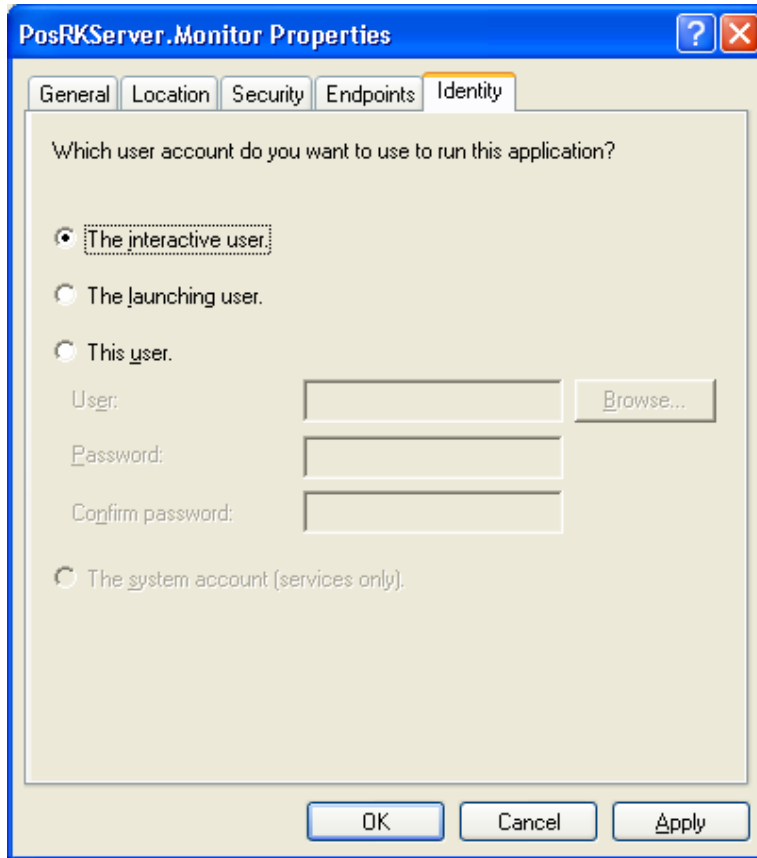
Verify that Everyone and System are included in the list with Allow Access rights. If they are not, you can use the Add button to add them to the list. Click OK when the list is complete.

Click the Edit button in the Launch Permissions panel.



Verify that Everyone and System are included in the list with Allow Launch permissions. If they are not, use the Add button to add them to the list. Click OK when the list is complete.

Select the Identity tab, check The interactive user option, click OK to close the Server's Properties dialog box.



Repeat the procedure for all the POSRK sever in your PC: PosRKServer.Monitor, PosRKWorker.CreateObj and PosRKMainServer.ServerCollection (if server installation).

Click OK and to close Dcomcnfg.

7. Port Redirection

The printer driver uses in exclusive mode the port (COM or LPT) where it is installed. So it is not possible to work with the printer driver and the toolkit on the same port.

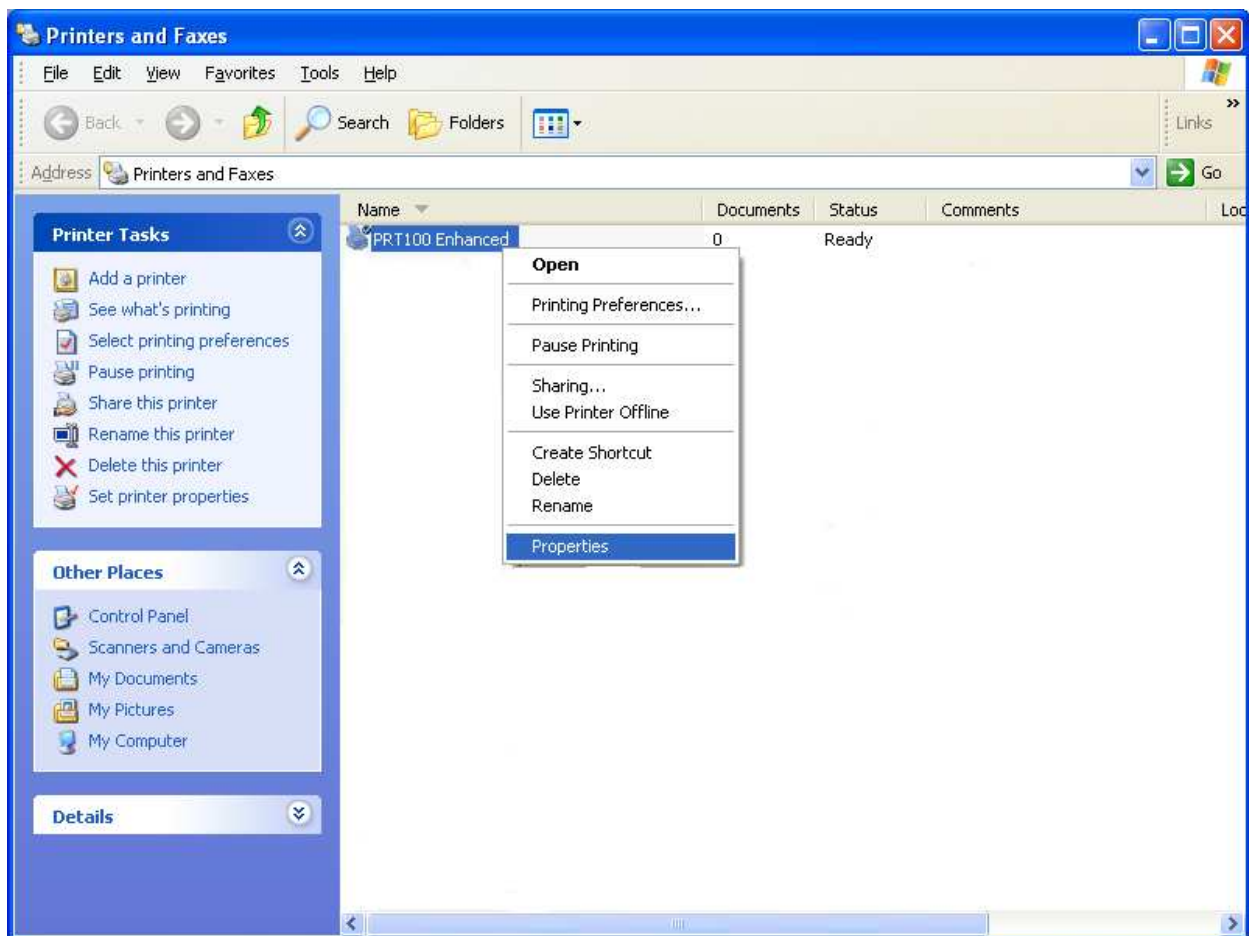
This is not true for the USB installation. The USB can be shared between printer driver and toolkit.

For LPT or COM installation if it is necessary to use the toolkit need temporary change the port where the driver is installed.

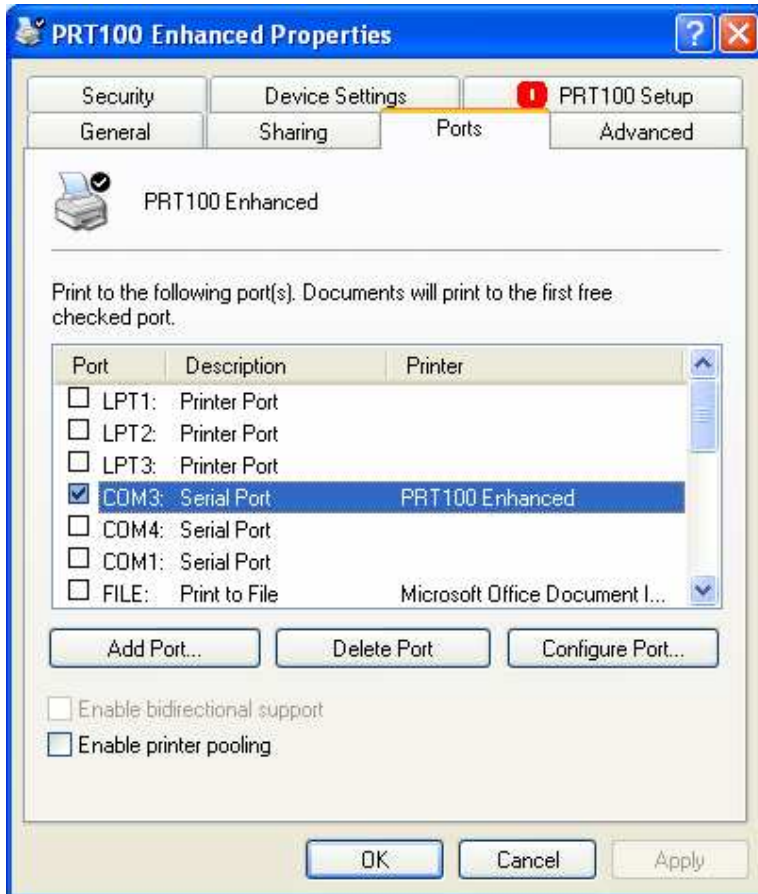
The procedure to do this operation is described below (the description is referred to Windows XP but it is very closed for the others operative system).

In the description, as example, we have supposed that the selected port was COM1, but the same procedure works for any LPT or COM port has been selected .

From the Control Panel select "Printers and Faxes" and right click on the PRT100 driver. Select "Properties"



Select the "Ports" tab in the properties sheet



Select a different temporary port where printer driver has to work (for example COM2 or LPT1 or FILE). Press "Apply" and the OK to close the properties sheet.

Repeat the procedure for all the printer installed to COM1.

	Title PRT100 Toolkit Installation Guide	Rev. 1.01	Date 21/09/2009	Page 32/32
---	---	----------------------------	----------------------------------	-----------------------------

8. Silent install/uninstall

It's possible to install the toolkit in a silent-unattended manner using the following command:

```
<toolkit name> /S /PORT:<port name> /OPT:<components> [ /KEY:<key name>:<key values> ] .
```

Where

S: enable the silent mode

PORT : is the name of communication channel (COMx, LPTx, USBxxx). To be sure to use the correct USB number we suggest to switching on and connecting the printer before run the installation.

OPT : represents the components that must be installed (A = Resource Kit, B= OPOS, C= Demo , D= PrinterDriiver).

KEY: is an optional value used to enable specific not-standard functionality For example /KEY:FORCED_CUT:Yes always force the paper cut at the end of document.

E.g.(1). **ToolKit_PRT100_Enhanced_2.00_01.exe /S /PORT:USB001 /OPT:D /KEY:FORCED_CUT:YES**

E.g.(2). **ToolKit_PRT100_Enhanced_2.00_01.exe /S /PORT:USB001 /OPT:ABCD**

Running the <toolkit name> with the option /? an help windows is displayed.

E.g.(3) **ToolKit_PRT100_Enhanced_2.00_01.exe /?**

It's possible to uninstall the toolkit in a silent-unattended manner using the following command :

```
<installation_path>\POSRK\ UNWISE.EXE" /S <installation_path>\POSRK\INSTALL.LOG
```

E.g. **C:\Program Files\POSRK\UNWISE.EXE /S C:\Program Files\POSRK\INSTALL.LOG**

Note: the network Environment is not available using the silent installation, the toolkit is always installed in local environment.