



Systems Division

Title

**Printer Configuration Tool
User's Manual**

Rev.


1.03

Date

23/03/2004


Printer Configuration Tool

User's Manual

 <i>Systems Division</i>	Title Printer Configuration Tool User's Manual	Rev. 1.03	Date 23/03/2004	Page 2/7
--	---	----------------------------	----------------------------------	---------------------------

Contents

- 1. INTRODUCTION3
- 1.1. Document releases 3
- 1.2. Reference documents 3
- 1.3. Conventions 3
- 2. ARCHITECTURE4
- 3. USER INTERFACE5

 <i>Systems Division</i>	Title Printer Configuration Tool User's Manual	Rev. 1.03	Date 23/03/2004	Page 3/7
--	---	----------------------------	----------------------------------	---------------------------

1. Introduction

This document describes the POSRKServer functionality and its user interface named "Printer Configuration Tool"

1.1. Document releases

Revision	Date	Pages	Comments
1.00	14/07/2003	7	First edition
1.01	21/10/2003	7	Second edition
1.02	19/11/2003	8	Included description for OPOS configuration
1.03	23/03/2004	7	Removed description for OPOS configuration

1.2. Reference documents

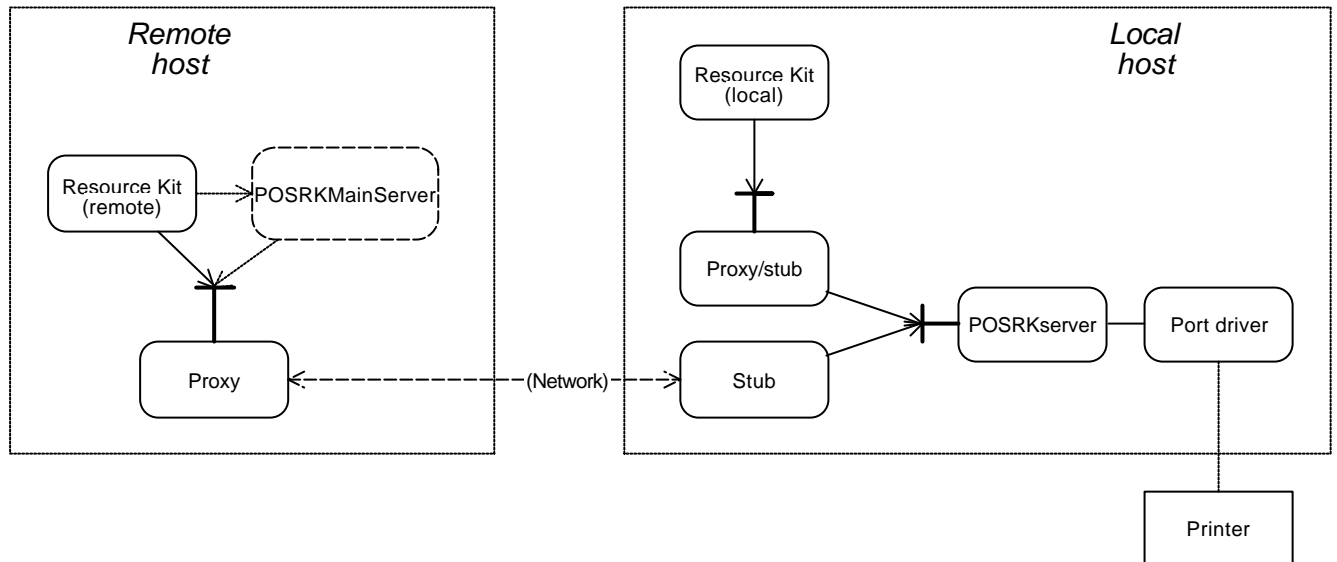
Reference	Name	Description	Code
-----------	------	-------------	------

1.3. Conventions

Example	Description
(<i>z</i> 1)	Reference document number. Es. (<i>z</i> 1) Means first document of the reference documents list.

2. Architecture

This component is used by the resource kit, Demo and Opos driver for retail printers. It is a DCOM component that allows the application to use it, with the same interface, locally or in a network domain,



The POS-RK Server includes two components: POSRKMainServer and POSRKServer.

POSRKMainServer: This component must be installed on the PC that is used as network supervisor. It receives a notification for each printer installed in the system and registers it. The application, using this component, can choose one or more printers in the network and work with them like were installed locally.

POSRKServer: This component is installed on each PC where the printer is installed. It exports a DCOM interface that can be used by the application locally or remotely to communicate with the printer.

This component has a user interface named "Printer Configuration Tool". It is used to set the main server address and configure the local printers.

The following sections describe this user interface.

3. User Interface

When the Printer Configuration Tool runs for the first time and the network installation has been chosen it is necessary to registry the MainServer computer's name. This can be done with the following window:

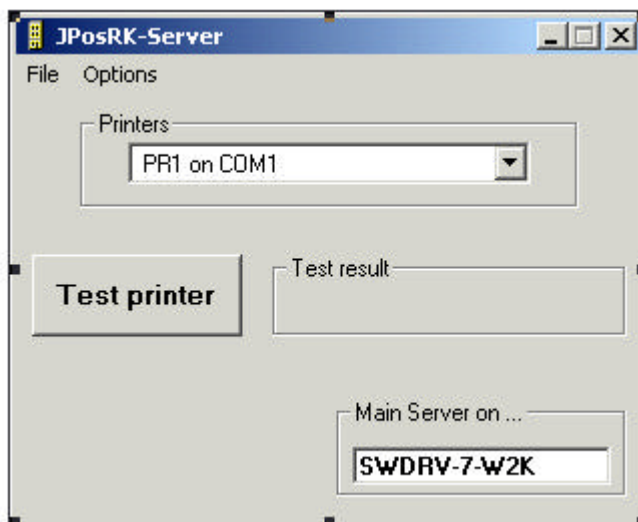


This window is shown only the first time the Server runs to set the main server address or when the server start but is not able to find the main server.

If the component has been installed locally this window will be not shown.

After this operation it is possible to start. In order to run the Printer Configuration Tool it is necessary to select the Printer Configuration Tool item in the "PRT100 Toolkit" menu.

The main windows is shown below:




The "Main Server on" control allows to modify the main server name. This control is shown only for a network installation.

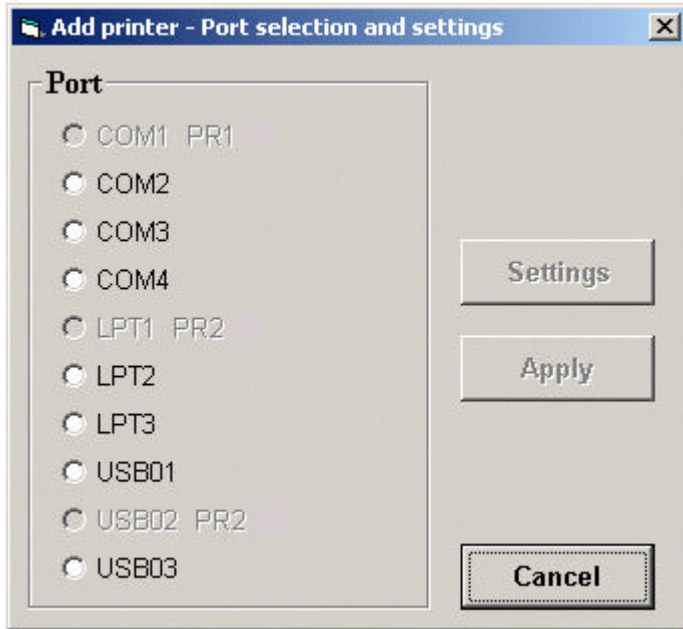
This window is mainly used to configure the POSRKServer with the printers that are connected with the PC. In order to do this job need to use the "Options Menu"

The Option menu has the following fields:

- ?? Add Printer: To add a new printer
- ?? Remove Printer: To remove a printer
- ?? Setting: To modify the settings of the selected printer

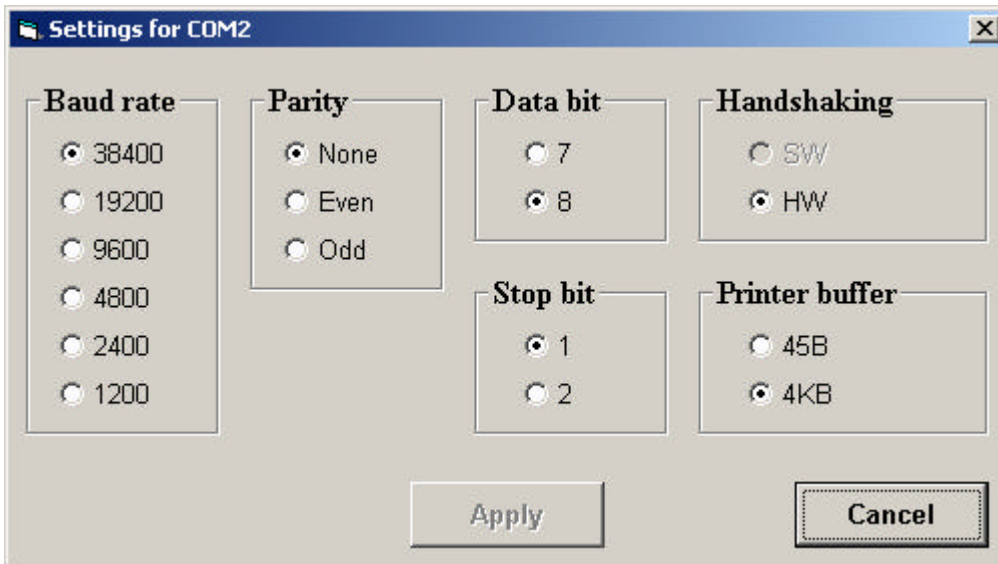
 <i>Systems Division</i>	Title Printer Configuration Tool User's Manual	Rev. 1.03	Date 23/03/2004	Page 6/7
--	---	----------------------------	----------------------------------	---------------------------

Selecting the Add Printer item the following window is shown:



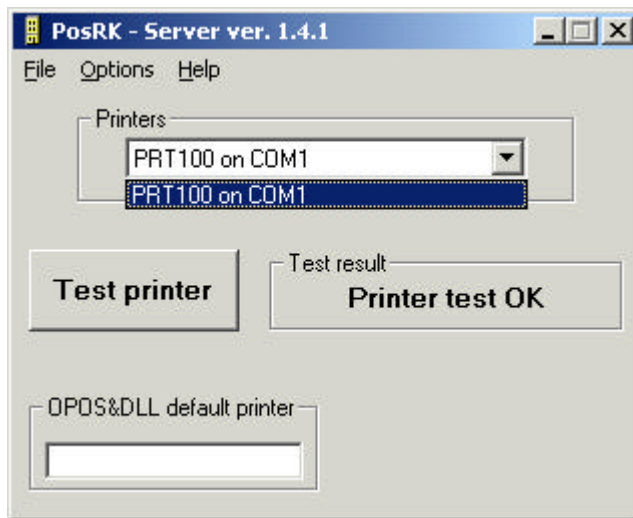
Using this window it is possible to select the port where the printer is installed. In this example we have 3 printers installed, one on COM1, one on LPT1 and one on USB.

If the port where the printer is installed need to be set it is possible to do it pressing the “Settings” button:



This window allows setting the right parameters for the selected COM port.

After the “Add Printer” procedure the main window’s “Printers” combo shows the list of the installed printers:



At this point it is possible to select a printer and test it, if the test is OK the system is ready to work.

NOTE:

1. It is not possible to work with OPOS, DEMO or RK without doing this procedure. At the end of the procedure it is necessary to close the Printer Configuration Tool in order to work with the others programs.
2. If a printer driver is installed on the same COM port where the printer is plugged, the Printer Configuration Tool cannot work appropriately because the printer drive uses the COM port in exclusive mode. In order to avoid the problem it is necessary to configure temporarily the printer driver to work another port.