




	Title LAN Printer Setup User's Manual	Rev. 1.03	Date 13/09/2005
--	--	---------------------	---------------------------


LAN Printer Setup

User's Manual

	Title LAN Printer Setup User's Manual	Rev. 1.03	Date 13/09/2005	Page 2/14
---	--	----------------------------	----------------------------------	----------------------------

Contents

1. INTRODUCTION	3
1.1. Document releases	3
1.2. Reference documents	3
1.3. Conventions	3
2. ARCHITECTURE	4
3. LAN PRINTER CONFIGURATION	5
4. RESTORE FACTORY SETTINGS.....	13
5. LEDS DESCRIPTION	14

	Title LAN Printer Setup User's Manual	Rev. 1.03	Date 13/09/2005	Page 3/14
---	--	----------------------------	----------------------------------	----------------------------

1. Introduction

This document describes the operations needed to configure a LAN Printer using the Lan Printer Setup tool.

1.1. Document releases


Revision	Date	Pages	Comments
1.00	21/10/2004	9	First edition
1.01	14/12/2004	9	- Changed the tool's name - Modified the initialization procedure for LAN without DHCP
1.03	13/09/2005	14	- Updated and inserted the chapter 5 and 6

1.2. Reference documents

Reference	Name	Description	Code
-----------	------	-------------	------

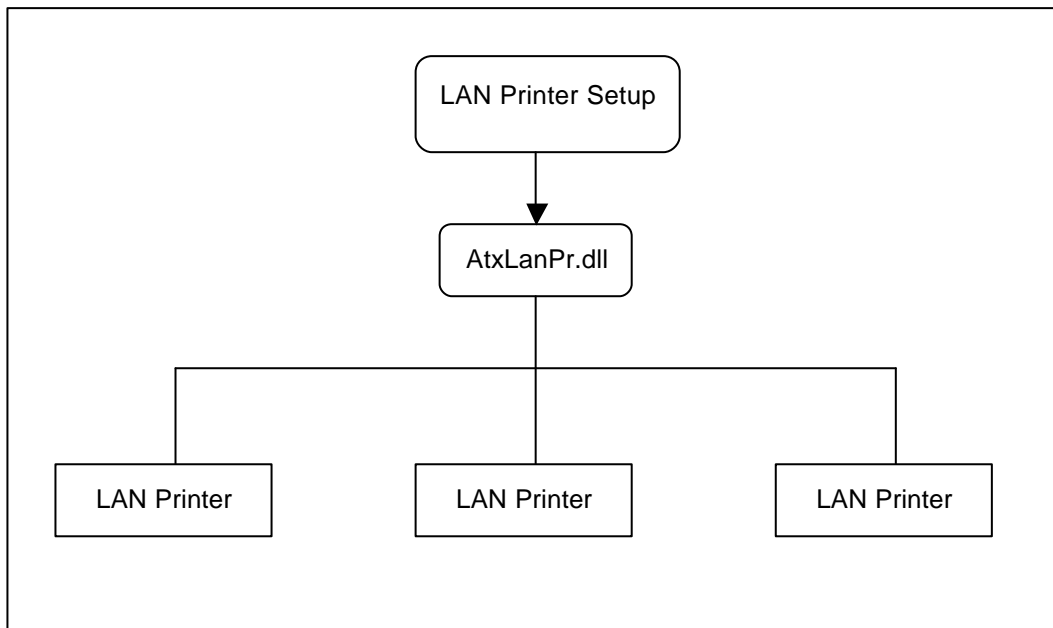
1.3. Conventions


Example	Description
(1)	Reference document number. Es. (1) Means first document of the reference documents list.

	Title LAN Printer Setup User's Manual	Rev. 1.03	Date 13/09/2005	Page 4/14
---	--	---------------------	---------------------------	---------------------

2. Architecture

The Lan Printer Setup tool use the Olivetti AtxLanPr.dll ActiveX to communicate with the LAN printers using the UDP protocol.



	Title LAN Printer Setup User's Manual	Rev. 1.03	Date 13/09/2005	Page 5/14
---	--	----------------------------	----------------------------------	----------------------------

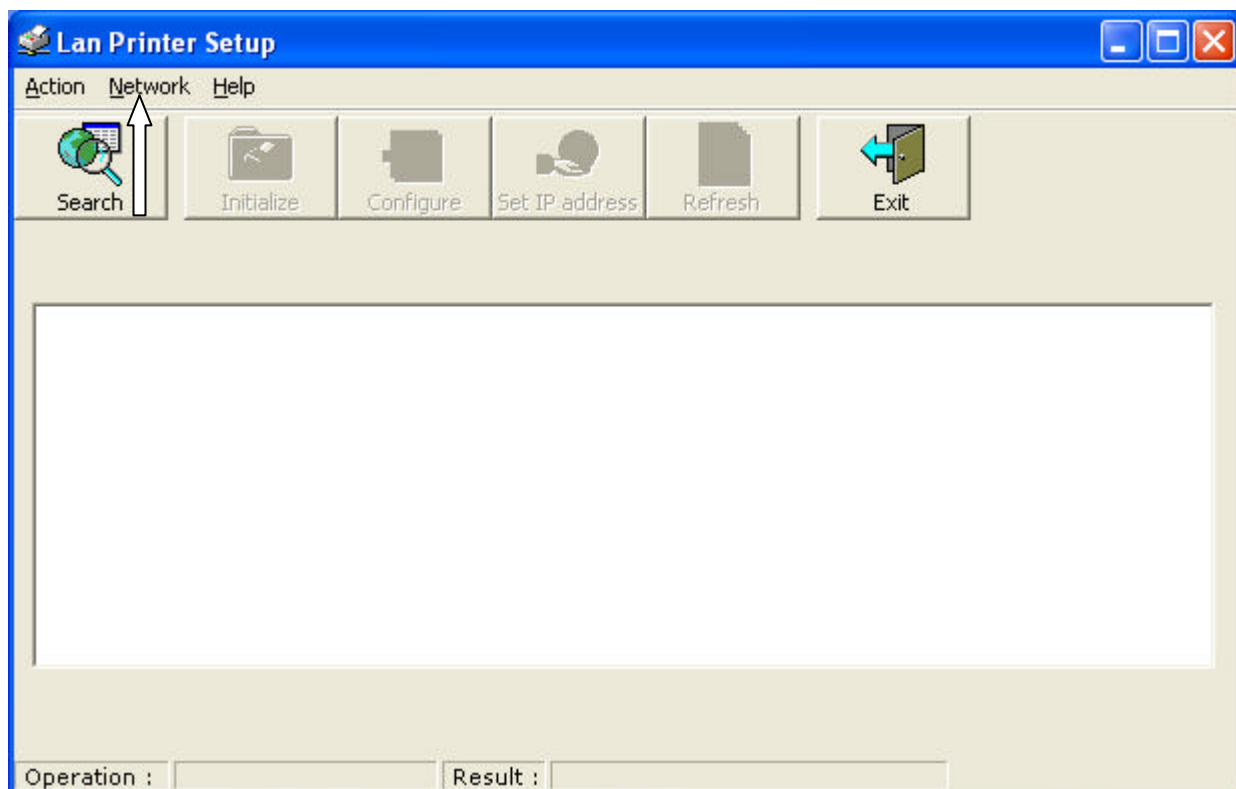
3. LAN Printer configuration

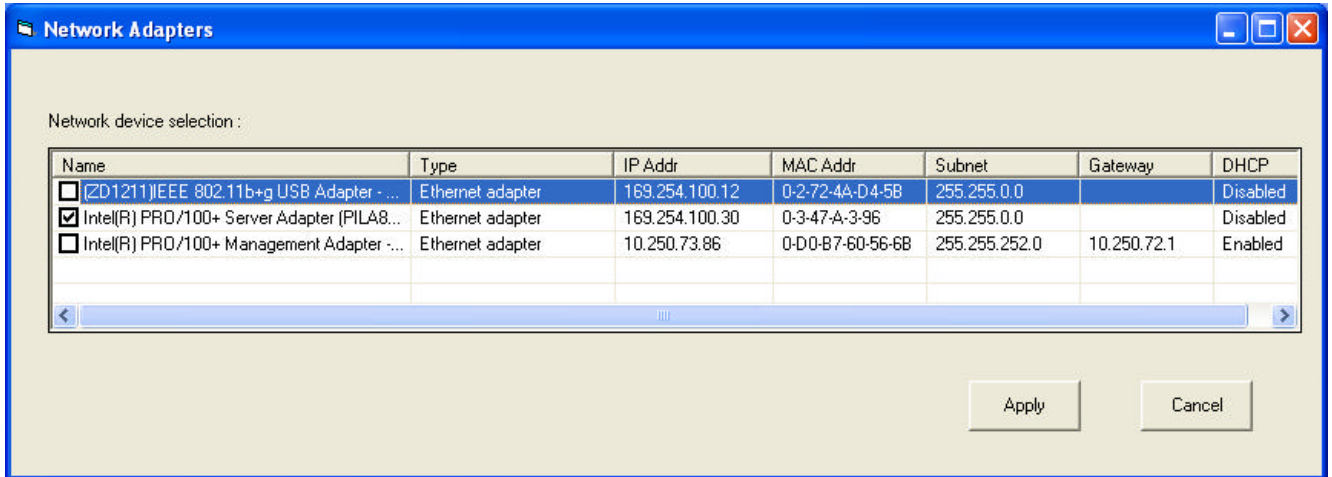
1. Prepare a PC with a network adapter and configure it to communicate with the LAN printer following these guidelines :
 - a. LAN with a DHCP server:
switch on the printer, the DHCP server automatically assigns it a valid IP address and the LAN printer will be immediately visible on your LAN.
 - b. LAN without a DHCP server :
switch on the printer, the printer AutoIP process assign it an IP address on the range 169.254.1.0 – 169.254.254.255. Configure your PC network card with the same IP address range and connect it to the printer using a crossed LAN cable or a network hub.

? *Note: The LAN printer ships with a default IP address of 0.0.0.0, which automatically enables DHCP and AutoIP within the unit. AutoIP is an alternative to DHCP that allows hosts to automatically obtain an IP address in smaller network that may not have a DHCP server. A range of IP address (from 169.254.1.0 to 169.254.254.255) has been explicitly reserved for AutoIP enabled devices.*

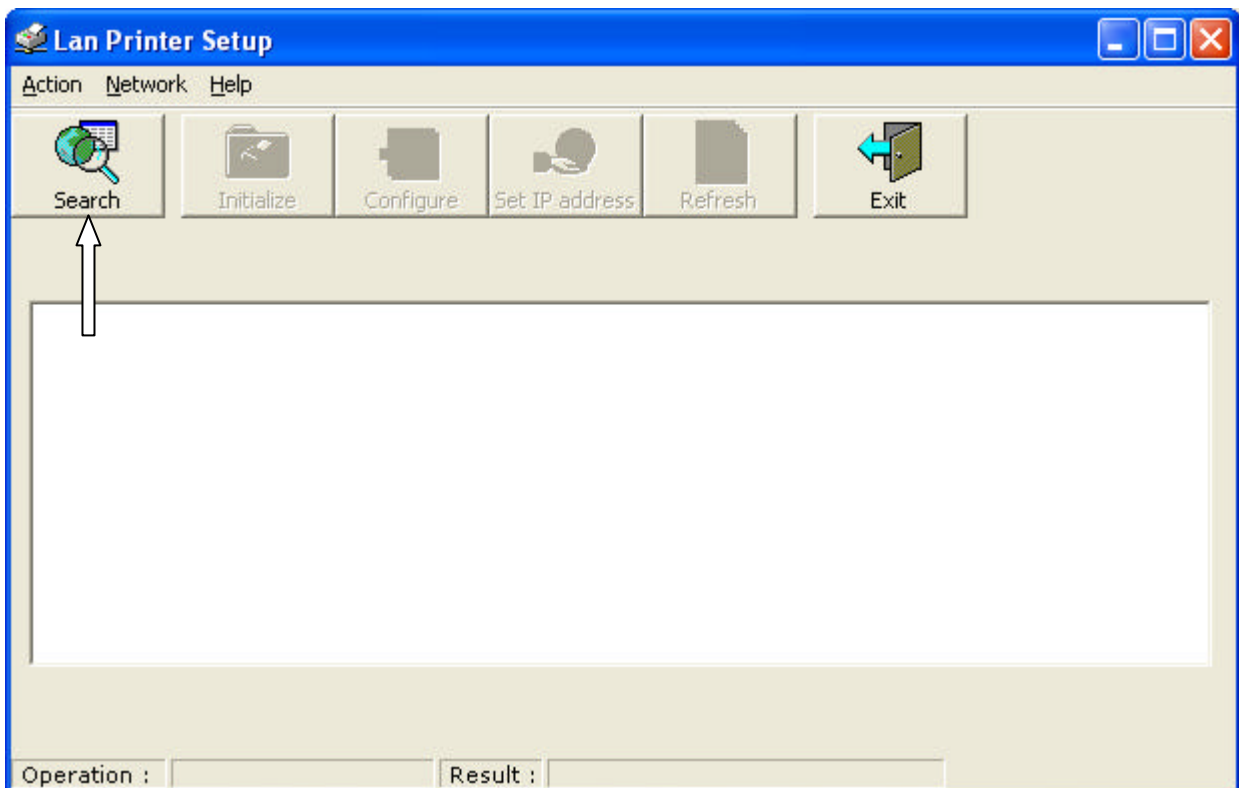
2. Run the **Lan Printer Setup** tool.

If you have installed on your PC more than one Network Interface card, select the **Network** menu and select the Network wireless device configured to communicate with the printer:

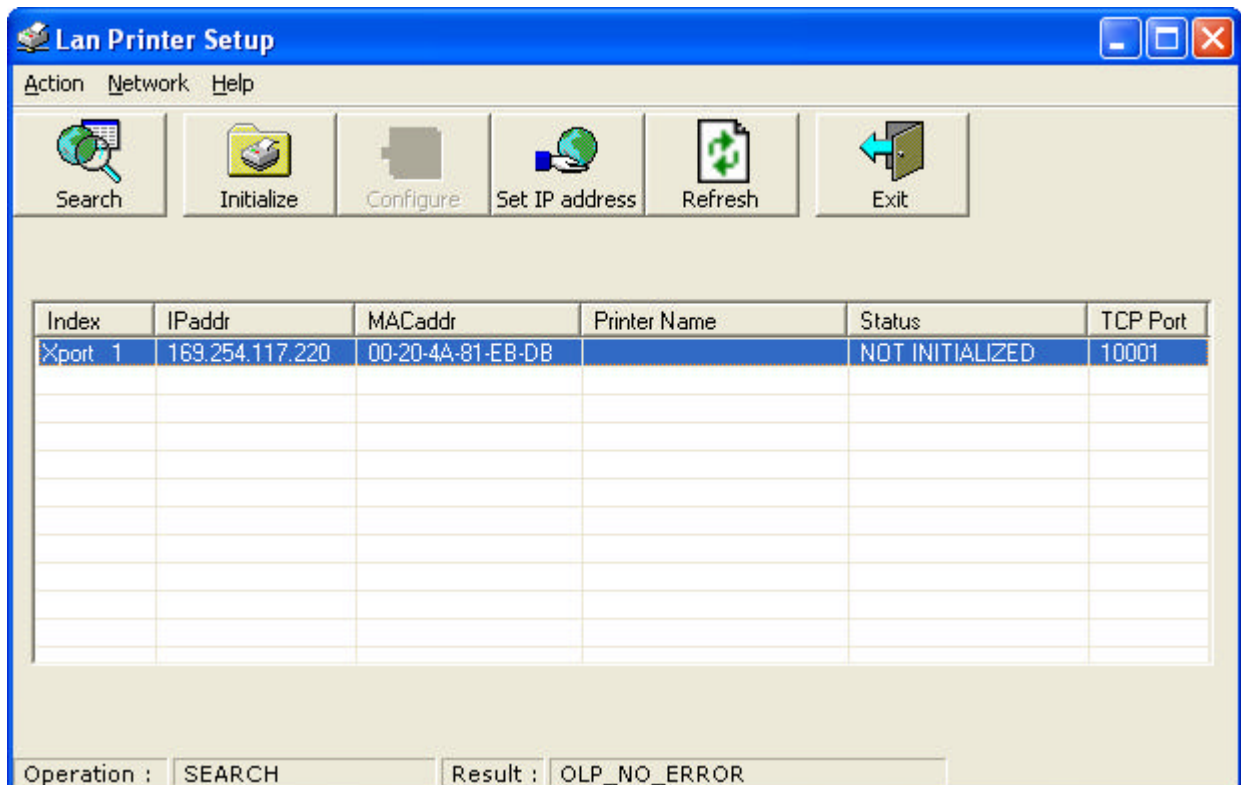




3. Perform a **Search** operation



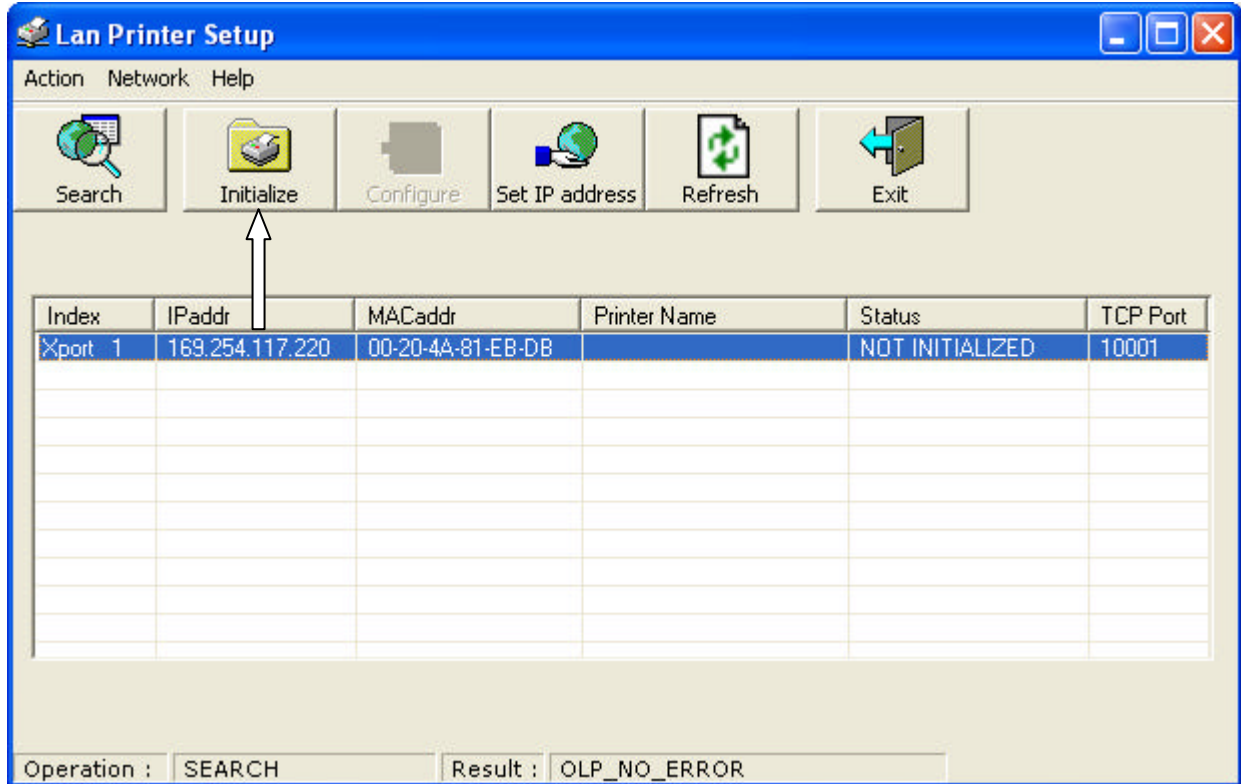
The search operation allows finding all the known printers in the networks. The result will be a list of all the available printers.



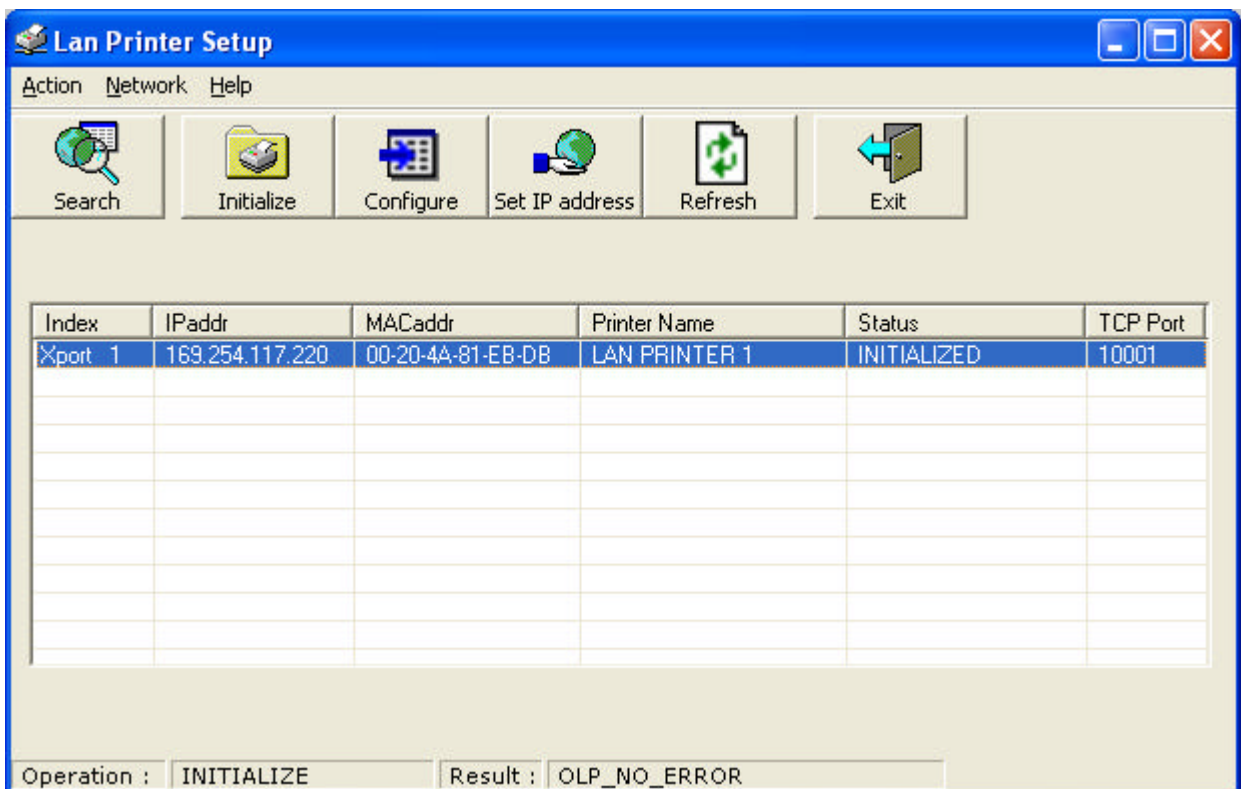
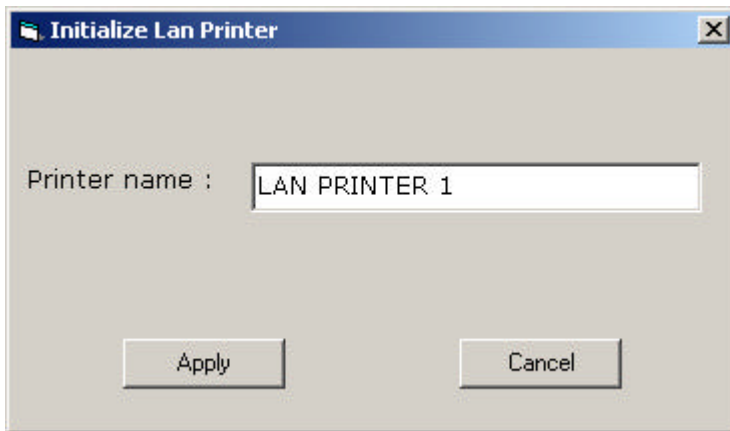
For each printer will be listed the IP address, the MAC address, the Printer Name, the Status and the TCP port used.


4. **Initialize** the printer.

The first time the printers are in NOT INITIALIZED status and must be initialized using the **Initialize** button.

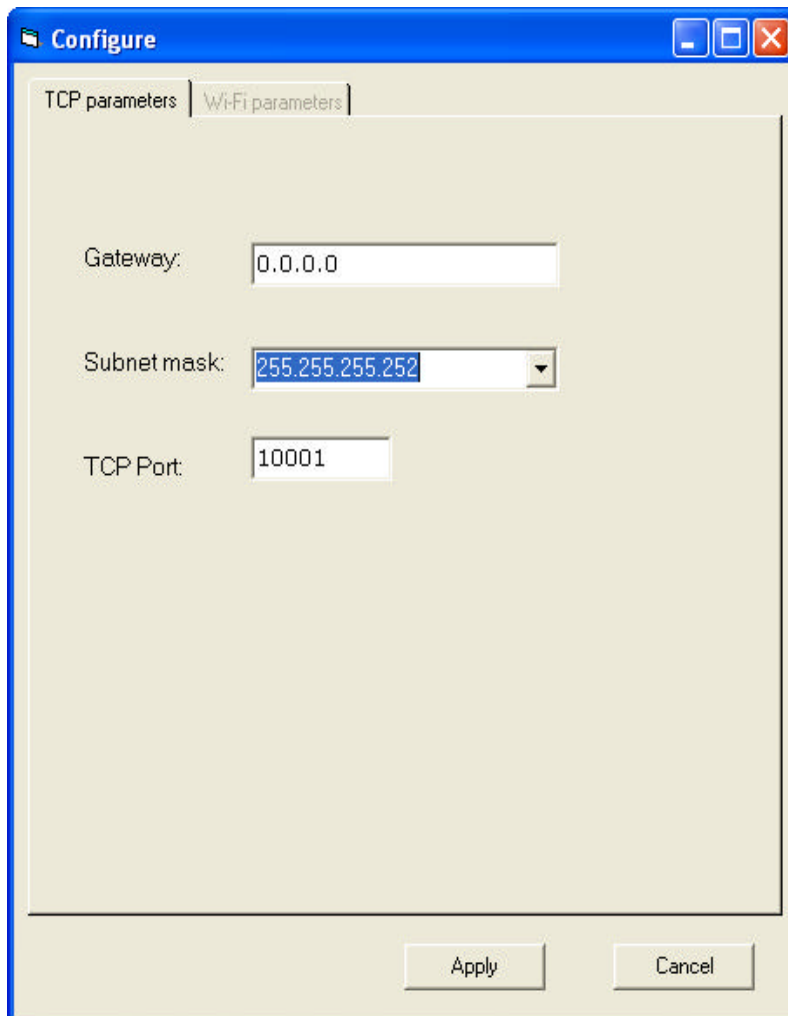


5. Initialize a printer consists to assign it a printer name:

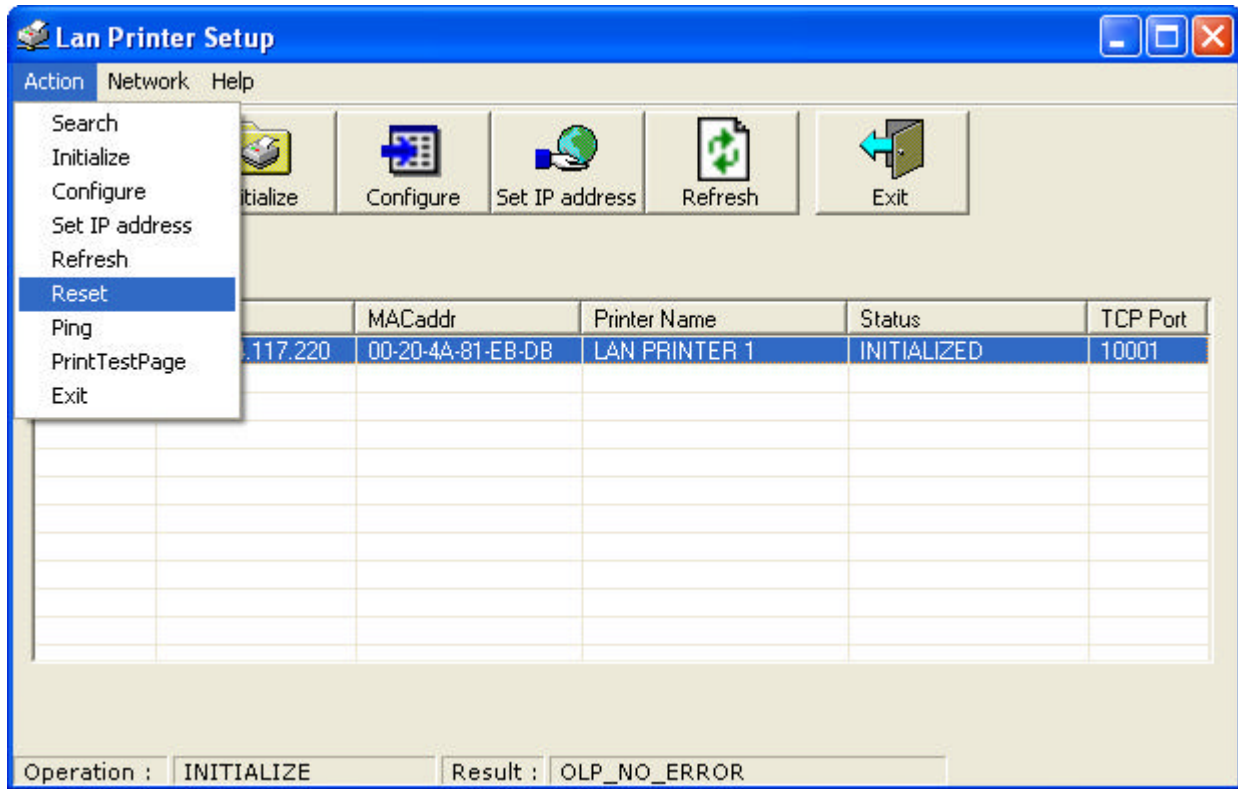



	Title LAN Printer Setup User's Manual	Rev. 1.03	Date 13/09/2005	Page 10/14
---	--	---------------------	---------------------------	----------------------

When the printer is in INITIALIZED status it can be **configured** to change some TCP settings:



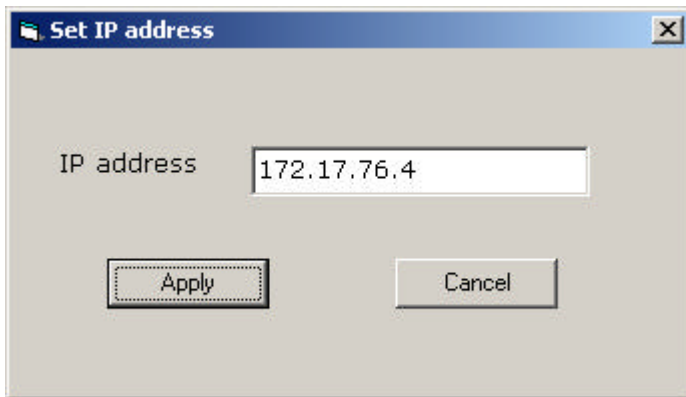
To take back the printer in the NOT INITIALIZED status must be select the **reset** menu item:



	Title LAN Printer Setup User's Manual	Rev. 1.03	Date 13/09/2005	Page 12/14
---	--	---------------------	---------------------------	----------------------

6. Change the IP address.

To change the IP address select the **Set IP address** button on the main menu. This function can be very useful when the LAN printer is configured with an AutoIP address (from 169.254.1.0 to 169.254.254.255) and , after INITIALIZED , we want to change its IP address to make it visible on a LAN which use IP address out of AutoIP range.



4. Restore factory settings

Hold down the **reset button** on the LAN interface (fig. 2), after a short beep wait again about ten seconds and release it after the second beep.

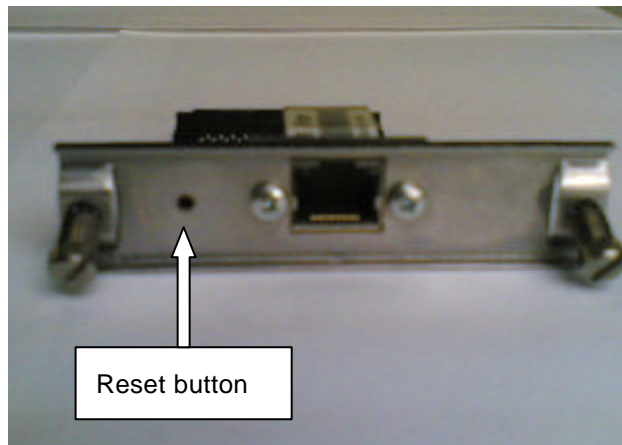


fig 2

If the operation succeeds the printer prints :

Please, wait loading default

***** LAN Interface Card *******

default values loaded

olivetti	Title LAN Printer Setup User's Manual	Rev. 1.03	Date 13/09/2005	Page 14/14
-----------------	--	---------------------	---------------------------	----------------------

5. Leds description

The LAN interface contains two bi-color LEDs built into the front of the interface (fig. 3) :

- ?? Link led – Off mean no link, Amber 10 Mbps and Green 100 Mbps.
- ?? Activity led – Off no Activity, Amber Half-duplex and Green Full-Duplex.

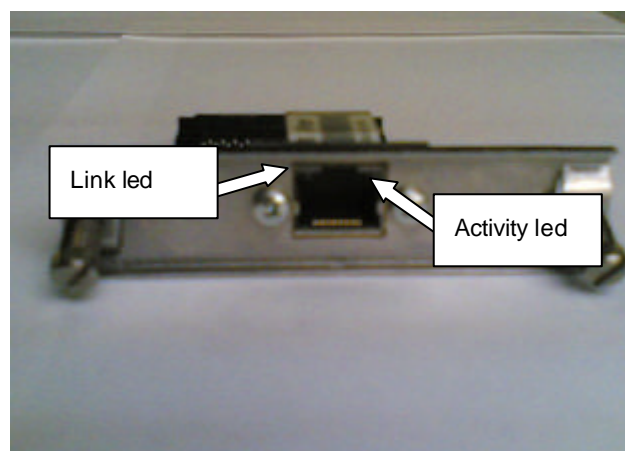


fig. 3